

For Research Use Only

Hikeshi Polyclonal antibody

Catalog Number: 14808-1-AP

Featured Product

5 Publications



Basic Information

Catalog Number:
14808-1-AP

Size:
150ul, Concentration: 167 µg/ml by Bradford method using BSA as the standard;

Source:
Rabbit

Isotype:
IgG

Immunogen Catalog Number:
AG6530

GenBank Accession Number:
BC001677

GeneID (NCBI):
51501

Full Name:
chromosome 11 open reading frame 73

Calculated MW:
22 kDa

Observed MW:
22 kDa

Purification Method:
Antigen affinity purification

Recommended Dilutions:
WB 1:500-1:1000
IP 0.5-4.0 ug for IP and 1:500-1:1000 for WB
IHC 1:20-1:200

Applications

Tested Applications:
IHC, IP, WB, ELISA

Cited Applications:
IHC, WB

Species Specificity:
human, mouse, rat

Cited Species:
human, mouse

Note-IHC: suggested antigen retrieval with TE buffer pH 9.0; (*) Alternatively, antigen retrieval may be performed with citrate buffer pH 6.0

Positive Controls:

WB: mouse kidney tissue, A375 cells, mouse brain tissue, PC-3 cells

IP: mouse brain tissue,

IHC: human kidney tissue,

Background Information

Notable Publications

Author	Pubmed ID	Journal	Application
K Berthenet	27819670	Oncogene	
Simon Edvardson	26545878	J Med Genet	WB
Antonios Apostolopoulos	30619453	Front Genet	WB

Storage

Storage:

Store at -20°C. Stable for one year after shipment.

Storage Buffer:

PBS with 0.02% sodium azide and 50% glycerol pH 7.3.

Aliquoting is unnecessary for -20°C storage

*** 20ul sizes contain 0.1% BSA

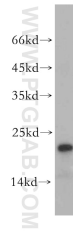
For technical support and original validation data for this product please contact:

T: 1 (888) 4PTGLAB (1-888-478-4522) (toll free in USA), or 1(312) 455-8498 (outside USA)

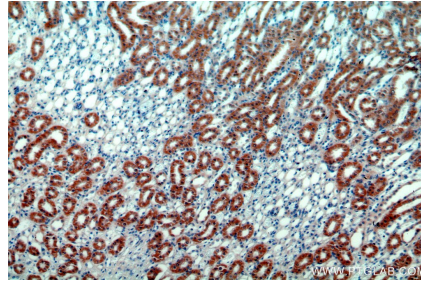
E: proteintech@ptglab.com
W: ptglab.com

This product is exclusively available under Proteintech Group brand and is not available to purchase from any other manufacturer.

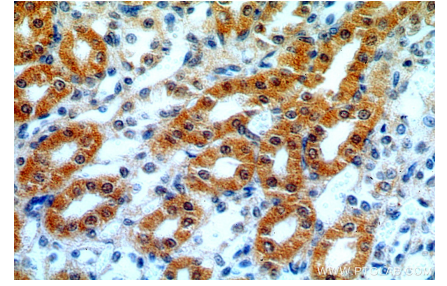
Selected Validation Data



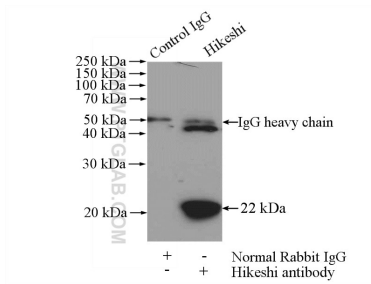
mouse kidney tissue were subjected to SDS PAGE followed by western blot with 14808-1-AP (Hikeshi antibody) at dilution of 1:500 incubated at room temperature for 1.5 hours.



Immunohistochemical analysis of paraffin-embedded human kidney using 14808-1-AP (Hikeshi antibody) at dilution of 1:50 (under 10x lens).



Immunohistochemical analysis of paraffin-embedded human kidney using 14808-1-AP (Hikeshi antibody) at dilution of 1:50 (under 40x lens).



IP Result of anti-Hikeshi (IP:14808-1-AP, 4ug; Detection:14808-1-AP 1:500) with mouse brain tissue lysate 2640ug.