

For Research Use Only

GPKOW Polyclonal antibody

Catalog Number: 14728-1-AP



Basic Information

Catalog Number: 14728-1-AP	GenBank Accession Number: BC000397	Purification Method: Antigen affinity purification
Size: 150ul , Concentration: 600 µg/ml by Nanodrop and 247 µg/ml by Bradford method using BSA as the standard;	GeneID (NCBI): 27238	Recommended Dilutions: WB 1:2000-1:12000 IHC 1:50-1:500 IF 1:50-1:500
Source: Rabbit	Full Name: G patch domain and KOW motifs	
Isotype: IgG	Calculated MW: 52 kDa	
Immunogen Catalog Number: AG6487	Observed MW: 52 kDa	

Applications

Tested Applications: IF, IHC, WB, ELISA	Positive Controls:
Species Specificity: human, mouse, rat	WB: A431 cells, human liver tissue, HeLa cells, MCF-7 cells
Note-IHC: suggested antigen retrieval with TE buffer pH 9.0; (*) Alternatively, antigen retrieval may be performed with citrate buffer pH 6.0	IHC: human breast cancer tissue,
	IF: HeLa cells,

Background Information

Storage

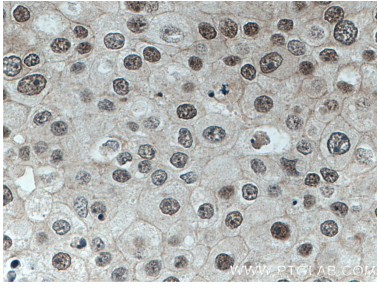
Storage:
Store at -20°C. Stable for one year after shipment.
Storage Buffer:
PBS with 0.02% sodium azide and 50% glycerol pH 7.3.
Aliquoting is unnecessary for -20°C storage

*** 20ul sizes contain 0.1% BSA

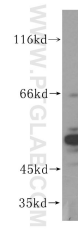
For technical support and original validation data for this product please contact:
T: 1 (888) 4PTGLAB (1-888-478-4522) (toll free in USA), or 1(312) 455-8498 (outside USA)
E: proteintech@ptglab.com
W: ptglab.com

This product is exclusively available under Proteintech Group brand and is not available to purchase from any other manufacturer.

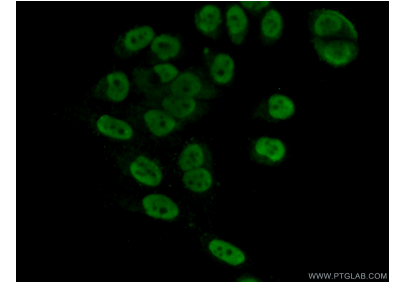
Selected Validation Data



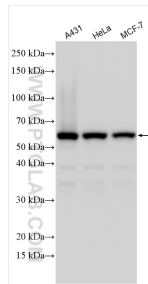
Immunohistochemical analysis of paraffin-embedded human breast cancer tissue slide using 14728-1-AP (GPKOW antibody) at dilution of 1:200 (under 40x lens. Heat mediated antigen retrieval with Tris-EDTA buffer (pH 9.0).



HeLa cells were subjected to SDS PAGE followed by western blot with 14728-1-AP (GPKOW antibody) at dilution of 1:500 incubated at room temperature for 1.5 hours.



Immunofluorescent analysis of (10% Formaldehyde) fixed HeLa cells using 14728-1-AP (GPKOW antibody) at dilution of 1:50 and Alexa Fluor 488-conjugated AffiniPure Goat Anti-Rabbit IgG(H+L).



Various lysates were subjected to SDS PAGE followed by western blot with 14728-1-AP (GPKOW antibody) at dilution of 1:6000 incubated at room temperature for 1.5 hours.