

For Research Use Only

MRPL48 Polyclonal antibody

Catalog Number: 14677-1-AP **8 Publications**



Basic Information

Catalog Number: 14677-1-AP	GenBank Accession Number: BC009764	Purification Method: Antigen affinity purification
Size: 150ul , Concentration: 1000 µg/ml by Nanodrop and 420 µg/ml by Bradford method using BSA as the standard;	GeneID (NCBI): 51642	Recommended Dilutions: WB 1:500-1:1000 IHC 1:20-1:200 IF 1:50-1:500
Source: Rabbit	Full Name: mitochondrial ribosomal protein L48	
Isotype: IgG	Calculated MW: 24 kDa	
Immunogen Catalog Number: AG6387	Observed MW: 20-21 kDa	

Applications

Tested Applications: IF, IHC, WB, ELISA	Positive Controls: WB : Jurkat cells, HeLa cells IHC : human pancreas cancer tissue, IF : HeLa cells,
Cited Applications: IF, WB	
Species Specificity: human, mouse, rat	
Cited Species: human, mouse, bovine	

Note-IHC: suggested antigen retrieval with TE buffer pH 9.0; (*) Alternatively, antigen retrieval may be performed with citrate buffer pH 6.0

Background Information

MRPL48, also named as CGI-118, or HSPC290 is a 212 amino acid protein, which localizes in the Mitochondrion. MRPL48 is a component of the large subunit of the mitochondrial ribosome, including two RNA molecules and, at least, 70 proteins among which 47 proteins for the large subunit. Mitochondrial ribosomal protein helps in protein synthesis within the mitochondrion.

Notable Publications

Author	Pubmed ID	Journal	Application
Shanshan Wu	36077543	Int J Mol Sci	IF
Ying Shu	36314841	EMBO J	WB
Brooke C Wilson	33122634	Nat Commun	WB

Storage

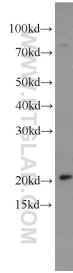
Storage:
Store at -20°C. Stable for one year after shipment.
Storage Buffer:
PBS with 0.02% sodium azide and 50% glycerol pH 7.3.
Aliquoting is unnecessary for -20°C storage

*** 20ul sizes contain 0.1% BSA

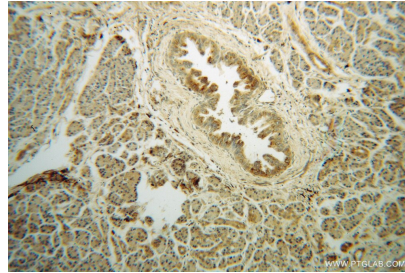
For technical support and original validation data for this product please contact:
T: 1 (888) 4PTGLAB (1-888-478-4522) (toll free in USA), or 1(312) 455-8498 (outside USA)
E: proteintech@ptglab.com
W: ptglab.com

This product is exclusively available under Proteintech Group brand and is not available to purchase from any other manufacturer.

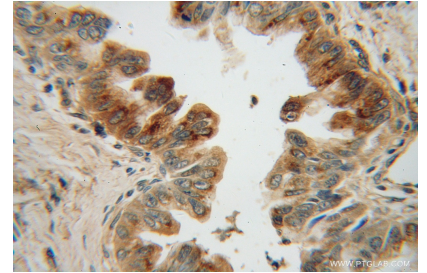
Selected Validation Data



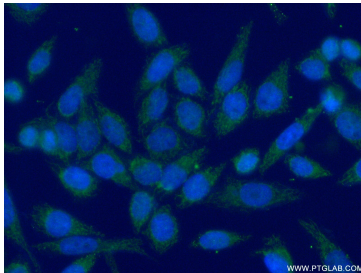
Jurkat cells were subjected to SDS PAGE followed by western blot with 14677-1-AP (MRPL48 antibody) at dilution of 1:800 incubated at room temperature for 1.5 hours.



Immunohistochemical analysis of paraffin-embedded human pancreas cancer using 14677-1-AP (MRPL48 antibody) at dilution of 1:50 (under 10x lens).



Immunohistochemical analysis of paraffin-embedded human pancreas cancer using 14677-1-AP (MRPL48 antibody) at dilution of 1:50 (under 40x lens).



Immunofluorescent analysis of (4% PFA) fixed HeLa cells using 14677-1-AP (MRPL48 antibody) at dilution of 1:50 and Alexa Fluor 488-conjugated AffiniPure Goat Anti-Rabbit IgG(H+L).