

For Research Use Only

RPL37A Polyclonal antibody

Catalog Number: 14660-1-AP **2 Publications**



Basic Information

Catalog Number: 14660-1-AP	GenBank Accession Number: BC063476	Purification Method: Antigen affinity purification
Size: 150ul, Concentration: 187 µg/ml by Nanodrop and 187 µg/ml by Bradford method using BSA as the standard;	GeneID (NCBI): 6168	Recommended Dilutions: WB 1:500-1:2000 IP 0.5-4.0 ug for IP and 1:500-1:1000 for WB
Source: Rabbit	Full Name: ribosomal protein L37a	IHC 1:20-1:200
Isotype: IgG	Calculated MW: 10 kDa	IF 1:20-1:200
Immunogen Catalog Number: AG6330	Observed MW: 10 kDa	

Applications

Tested Applications: FC, IF, IHC, IP, WB, ELISA	Positive Controls: WB : MCF7 cells, SH-SY5Y cells
Cited Applications: FC, WB	IP : MCF-7 cells,
Species Specificity: human, mouse, rat	IHC : human breast cancer tissue,
Cited Species: human	IF : SH-SY5Y cells,

Note-IHC: suggested antigen retrieval with TE buffer pH 9.0; (*) Alternatively, antigen retrieval may be performed with citrate buffer pH 6.0

Background Information

Notable Publications

Author	Pubmed ID	Journal	Application
Mahmoud Dabbah	33887527	Transl Res	FC
Magdalena Wolczyk	37123244	iScience	WB

Storage

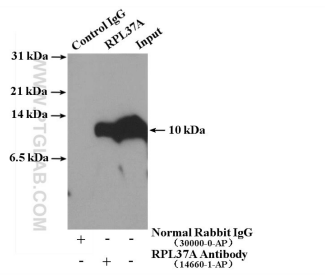
Storage:
Store at -20°C. Stable for one year after shipment.
Storage Buffer:
PBS with 0.02% sodium azide and 50% glycerol pH 7.3.
Aliquoting is unnecessary for -20°C storage

*** 20ul sizes contain 0.1% BSA

For technical support and original validation data for this product please contact:
T: 1 (888) 4PTGLAB (1-888-478-4522) (toll free in USA), or 1(312) 455-8498 (outside USA)
E: proteintech@ptglab.com
W: ptglab.com

This product is exclusively available under Proteintech Group brand and is not available to purchase from any other manufacturer.

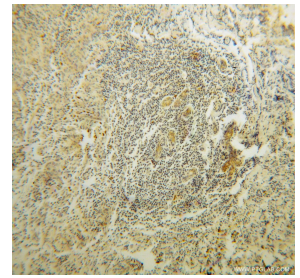
Selected Validation Data



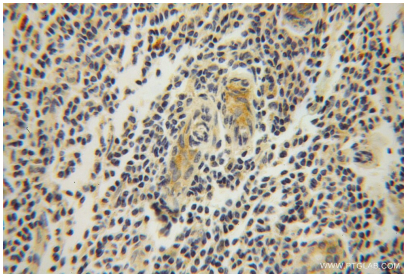
IP result of anti-RPL37A (IP:14660-1-AP, 4 μ g; Detection:14660-1-AP 1:500) with MCF-7 cells lysate 3480 μ g.



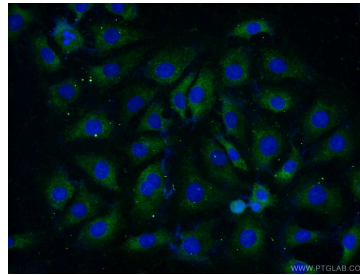
MCF7 cells were subjected to SDS PAGE followed by western blot with 14660-1-AP (RPL37A antibody) at dilution of 1:400 incubated at room temperature for 1.5 hours.



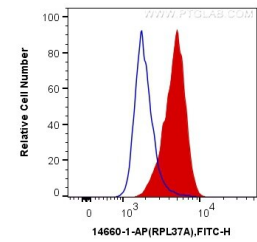
Immunohistochemical analysis of paraffin-embedded human breast cancer using 14660-1-AP (RPL37A antibody) at dilution of 1:100 (under 10x lens).



Immunohistochemical analysis of paraffin-embedded human breast cancer using 14660-1-AP (RPL37A antibody) at dilution of 1:100 (under 40x lens).



Immunofluorescent analysis of (-20°C Ethanol) fixed SH-SY5Y cells using 14660-1-AP (RPL37A antibody) at dilution of 1:50 and Alexa Fluor 488-conjugated AffiniPure Goat Anti-Rabbit IgG(H+L).



1X10⁶ MCF-7 cells were intracellularly stained with 0.2 μ g Anti-Human RPL37A (14660-1-AP) and CoraLite®488-Conjugated AffiniPure Goat Anti-Rabbit IgG(H+L) at dilution 1:1000 (red), or 0.2 μ g Control Antibody. Cells were fixed with 4% PFA and permeabilized with Flow Cytometry Perm Buffer (PF00011-C).