

For Research Use Only

# RPL13A Polyclonal antibody

Catalog Number: 14633-1-AP



## Basic Information

<b>Catalog Number:</b> 14633-1-AP	<b>GenBank Accession Number:</b> BC065236	<b>Purification Method:</b> Antigen affinity purification
<b>Size:</b> 150ul , Concentration: 450 µg/ml by Nanodrop;	<b>GeneID (NCBI):</b> 23521	<b>Recommended Dilutions:</b> WB 1:1000-1:5000
<b>Source:</b> Rabbit	<b>Full Name:</b> ribosomal protein L13a	
<b>Isotype:</b> IgG	<b>Calculated MW:</b> 23 kDa	
<b>Immunogen Catalog Number:</b> AG6212	<b>Observed MW:</b> 25-28 kDa	

## Applications

<b>Tested Applications:</b> WB, ELISA	<b>Positive Controls:</b> WB : A549 cells, Jurkat cells, HEK-293 cells, HeLa cells, RAW264.7 cells
<b>Species Specificity:</b> human, mouse	

## Background Information

Ribosomal protein L13a(RPL13a) is a member of the L13 ribosomal protein family and a structural component of the large 60S ribosomal subunit. It's a reference gene(RG) that stably expressed not only during differentiation, but also during expansion to higher passages. And it's suggested as a RG for a variety research field. RPL13a is a key component of the IFN-gamma-activated inhibitor of translation(GAIT) complex, which inhibits translation of a select group of inflammation-related transcripts via binding to the 3' UTR of target mRNA. once phosphorylated of Ser77 by ZIPK, RPL13a released from the complex.

## Storage

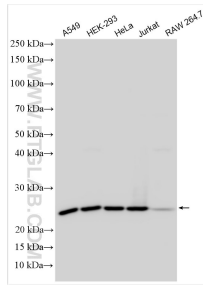
**Storage:**  
Store at -20°C. Stable for one year after shipment.  
**Storage Buffer:**  
PBS with 0.02% sodium azide and 50% glycerol pH 7.3.  
Aliquoting is unnecessary for -20°C storage

\*\*\* 20ul sizes contain 0.1% BSA

For technical support and original validation data for this product please contact:  
T: 1 (888) 4PTGLAB (1-888-478-4522) (toll free in USA), or 1(312) 455-8498 (outside USA)  
E: proteintech@ptglab.com  
W: ptglab.com

This product is exclusively available under Proteintech Group brand and is not available to purchase from any other manufacturer.

## Selected Validation Data



Various lysates were subjected to SDS PAGE followed by western blot with 14633-1-AP (RPL13A antibody) at dilution of 1:2500 incubated at room temperature for 1.5 hours.