

For Research Use Only

SMPD1,ASM Polyclonal antibody

Catalog Number: 14609-1-AP

Featured Product

16 Publications



Basic Information

Catalog Number: 14609-1-AP	GenBank Accession Number: BC041164	Purification Method: Antigen affinity purification
Size: 150ul , Concentration: 500 µg/ml by Nanodrop;	GeneID (NCBI): 6609	Recommended Dilutions: WB 1:500-1:1000 IHC 1:100-1:400
Source: Rabbit	Full Name: sphingomyelin phosphodiesterase 1, acid lysosomal	
Isotype: IgG	Calculated MW: 70 kDa	
Immunogen Catalog Number: AG6180	Observed MW: 60 kDa, 70-75 kDa	

Applications

Tested Applications: IHC, WB, ELISA	Positive Controls:
Cited Applications: IF, IHC, WB	WB : mouse brain tissue, mouse cerebellum tissue
Species Specificity: human, mouse, rat	IHC : human brain tissue, human tonsillitis tissue
Cited Species: human, rat, mouse	
Note-IHC: suggested antigen retrieval with TE buffer pH 9.0; (*) Alternatively, antigen retrieval may be performed with citrate buffer pH 6.0	

Background Information

SMPD1(Sphingomyelin phosphodiesterase) is also named as ASM and belongs to the acid sphingomyelinase family. It is an important enzyme in sphingolipid metabolism and plays key roles in apoptosis, immunity, development, and cancer. The deficient activity of this enzyme results in Types A and B Niemann-Pick disease (NPD). This protein has 4 isoforms produced by alternative splicing. SMPD1 can produce a 60 kDa peptide with its signal peptide missing.

Notable Publications

Author	Pubmed ID	Journal	Application
Jonghae Lee	36077841	Cancers (Basel)	WB
Xin Tracy Liu	36333295	Oncogenesis	WB
Yi-Yu Qi	35391788	Drug Des Devel Ther	IF

Storage

Storage:
Store at -20°C. Stable for one year after shipment.
Storage Buffer:
PBS with 0.02% sodium azide and 50% glycerol pH 7.3.
Aliquoting is unnecessary for -20°C storage

*** 20ul sizes contain 0.1% BSA

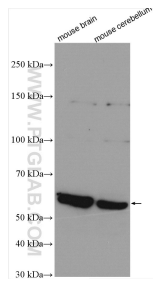
For technical support and original validation data for this product please contact:

T: 1 (888) 4PTGLAB (1-888-478-4522) (toll free in USA), or 1(312) 455-8498 (outside USA)

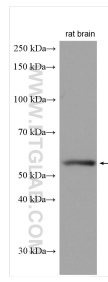
E: proteintech@ptglab.com
W: ptglab.com

This product is exclusively available under Proteintech Group brand and is not available to purchase from any other manufacturer.

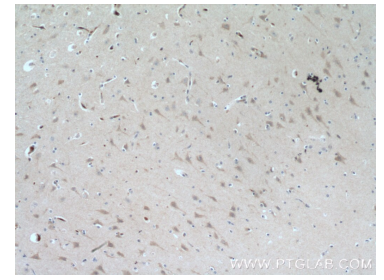
Selected Validation Data



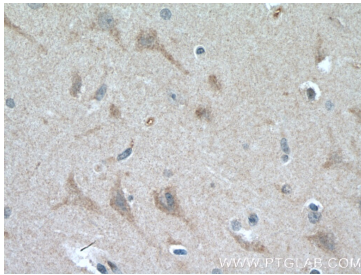
Various lysates were subjected to SDS PAGE followed by western blot with 14609-1-AP (SMPD1,ASM antibody) at dilution of 1:600 incubated at room temperature for 1.5 hours.



rat brain tissue were subjected to SDS PAGE followed by western blot with 14609-1-AP (SMPD1,ASM antibody) at dilution of 1:600 incubated at room temperature for 1.5 hours.



Immunohistochemical analysis of paraffin-embedded human brain tissue slide using 14609-1-AP (SMPD1,ASM Antibody) at dilution of 1:200 (under 10x lens). Heat mediated antigen retrieval with Tris-EDTA buffer (pH 9.0).



Immunohistochemical analysis of paraffin-embedded human brain tissue slide using 14609-1-AP (SMPD1,ASM Antibody) at dilution of 1:200 (under 40x lens). Heat mediated antigen retrieval with Tris-EDTA buffer (pH 9.0).