

For Research Use Only

# PKN2 Polyclonal antibody

Catalog Number: 14608-1-AP

Featured Product

2 Publications



## Basic Information

**Catalog Number:**  
14608-1-AP

**Size:**  
150ul, Concentration: 450 µg/ml by Nanodrop and 233 µg/ml by Bradford method using BSA as the standard;

**Source:**  
Rabbit

**Isotype:**  
IgG

**Immunogen Catalog Number:**  
AG6164

**GenBank Accession Number:**  
BC062620

**GeneID (NCBI):**  
5586

**Full Name:**  
protein kinase N2

**Calculated MW:**  
112 kDa

**Observed MW:**  
130 kDa

**Purification Method:**  
Antigen affinity purification

**Recommended Dilutions:**  
WB 1:500-1:3000  
IP 0.5-4.0 ug for IP and 1:500-1:2000 for WB  
IF 1:10-1:100

## Applications

**Tested Applications:**  
FC, IF, IP, WB, ELISA

**Cited Applications:**  
IHC, WB

**Species Specificity:**  
human

**Cited Species:**  
human, pig

**Positive Controls:**

**WB:** A2780 cells, K-562 cells, HeLa cells, HEK-293 cells, COLO 320 cells, SKOV-3 cells, HEK-293T cells

**IP:** COLO 320 cells,

**IF:** HepG2 cells, Hela cells

## Background Information

### Notable Publications

Author	Pubmed ID	Journal	Application
Liya Liu	34663329	Cancer Cell Int	WB
Maoliang Ran	30024056	Reprod Domest Anim	WB,IHC

## Storage

**Storage:**

Store at -20°C. Stable for one year after shipment.

**Storage Buffer:**

PBS with 0.02% sodium azide and 50% glycerol pH 7.3.

Aliquoting is unnecessary for -20°C storage

\*\*\* 20ul sizes contain 0.1% BSA

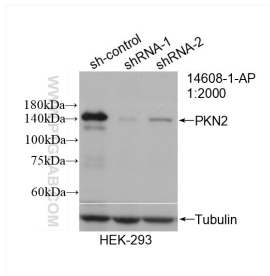
For technical support and original validation data for this product please contact:

T: 1 (888) 4PTGLAB (1-888-478-4522) (toll free in USA), or 1(312) 455-8498 (outside USA)

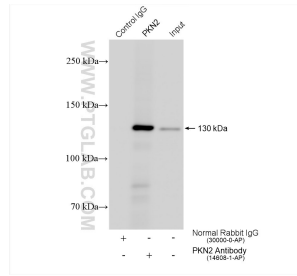
E: proteintech@ptglab.com  
W: ptglab.com

This product is exclusively available under Proteintech Group brand and is not available to purchase from any other manufacturer.

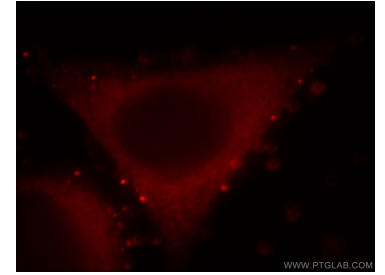
## Selected Validation Data



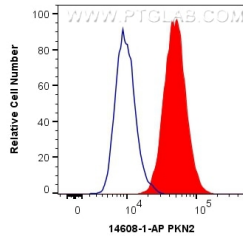
WB result of PKN2 antibody (14608-1-AP; 1:2000; incubated at room temperature for 1.5 hours) with sh-Control and sh-PKN2 transfected HEK-293 cells.



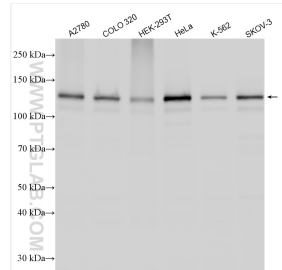
IP result of anti-PKN2(IP:14608-1-AP, 4ug; Detection:14608-1-AP 1:1000) with COLO 320 cells lysate 2560 ug.



Immunofluorescent analysis of HepG2 cells, using PKN2 antibody 14608-1-AP at 1:25 dilution and Rhodamine-labeled goat anti-rabbit IgG (red).



1X10<sup>6</sup> HepG2 cells were intracellularly stained with 0.4 ug Anti-Human PKN2 (14608-1-AP) and CoraLite®488-Conjugated AffiniPure Goat Anti-Rabbit IgG(H+L) at dilution 1:1000 (red), or 0.4 ug Isotype Control. Cells were fixed with 4% PFA and permeabilized with Flow Cytometry Perm Buffer (PF00011-C).



Various lysates were subjected to SDS PAGE followed by western blot with 14608-1-AP (PKN2) antibody) at dilution of 1:1500 incubated at room temperature for 1.5 hours.