

For Research Use Only

NACC1 Polyclonal antibody

Catalog Number: 14551-1-AP **3 Publications**



Basic Information

Catalog Number: 14551-1-AP	GenBank Accession Number: BC055396	Purification Method: Antigen affinity purification
Size: 150ul , Concentration: 1000 µg/ml by Nanodrop;	GeneID (NCBI): 112939	Recommended Dilutions: WB 1:1000-1:6000 IP 0.5-4.0 ug for IP and 1:200-1:1000 for WB
Source: Rabbit	Full Name: nucleus accumbens associated 1, BEN and BTB (POZ) domain containing	IHC 1:50-1:500 IF 1:200-1:800
Isotype: IgG	Calculated MW: 57 kDa	
Immunogen Catalog Number: AG6096	Observed MW: 60 kDa	

Applications

Tested Applications: IF, IHC, IP, WB, ELISA	Positive Controls: WB : LNCaP cells, MCF-7 cells
Cited Applications: WB	IP : MCF-7 cells,
Species Specificity: human, mouse	IHC : mouse ovary tissue, human ovary tumor tissue
Cited Species: human	IF : MCF-7 cells,

Note-IHC: suggested antigen retrieval with TE buffer pH 9.0; (*) Alternatively, antigen retrieval may be performed with citrate buffer pH 6.0

Background Information

NACC1, also named as BTBD14B and NAC1, belongs to the BTB/POZ family. NACC1 is a transcriptional repressor, which is amplified and overexpressed in various human cancers and plays critical roles in tumor development, progression, and drug resistance (PMID: 31101655). NACC1 has 1 isoform with the molecular mass of 57 kDa. While NAC1 has been shown to repress the transcription of two tumor suppressors, Gadd45-g and Gadd45-g- interacting protein 1, scientists have found that NACC1 also plays an important role in nontranscriptional function, for example, it can act as a bridge for MAVS and TBK1 in RLR-mediated signaling (PMID: 31235549).

Notable Publications

Author	Pubmed ID	Journal	Application
Hong-Fang Tao	33416160	Oncol Rep	WB
Yunzhao Luo	37747641	Genes Genomics	WB
Bin Xu	37577235	J Clin Transl Hepatol	WB

Storage

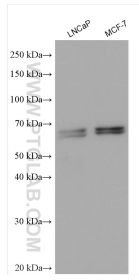
Storage:
Store at -20°C. Stable for one year after shipment.
Storage Buffer:
PBS with 0.02% sodium azide and 50% glycerol pH 7.3.
Aliquoting is unnecessary for -20°C storage

*** 20ul sizes contain 0.1% BSA

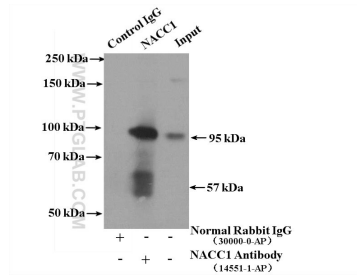
For technical support and original validation data for this product please contact:
T: 1 (888) 4PTGLAB (1-888-478-4522) (toll free in USA), or 1(312) 455-8498 (outside USA)
E: proteintech@ptglab.com
W: ptglab.com

This product is exclusively available under Proteintech Group brand and is not available to purchase from any other manufacturer.

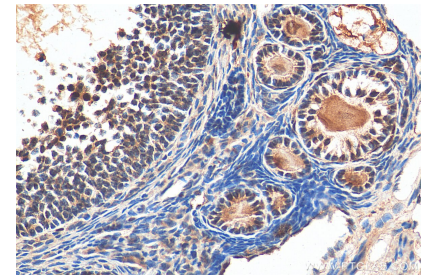
Selected Validation Data



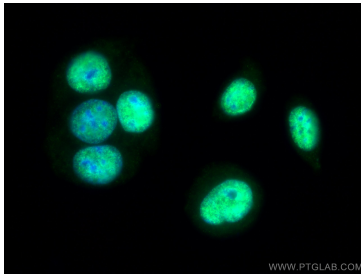
Various lysates were subjected to SDS PAGE followed by western blot with 14551-1-AP (NACC1 antibody) at dilution of 1:3000 incubated at room temperature for 1.5 hours.



IP Result of anti-NACC1 (IP:14551-1-AP, 4ug; Detection:14551-1-AP 1:300) with MCF-7 cells lysate 3200ug.



Immunohistochemical analysis of paraffin-embedded mouse ovary tissue slide using 14551-1-AP (NACC1 antibody) at dilution of 1:200 (under 40x lens). Heat mediated antigen retrieval with Tris-EDTA buffer (pH 9.0).



Immunofluorescent analysis of (-20°C Ethanol) fixed MCF-7 cells using NACC1 antibody (14551-1-AP) at dilution of 1:400 and CoraLite®488-Conjugated AffiniPure Goat Anti-Rabbit IgG(H+L).