

For Research Use Only

RPL12 Polyclonal antibody

Catalog Number: 14536-1-AP **2 Publications**



Basic Information

Catalog Number: 14536-1-AP	GenBank Accession Number: BC050644	Purification Method: Antigen affinity purification
Size: 150ul , Concentration: 245 µg/ml by Nanodrop and 133 µg/ml by Bradford method using BSA as the standard;	GeneID (NCBI): 6136	Recommended Dilutions: WB 1:500-1:2000
Source: Rabbit	Full Name: ribosomal protein L12	
Isotype: IgG	Calculated MW: 18 kDa	
Immunogen Catalog Number: AG6037	Observed MW: 21 kDa	

Applications

Tested Applications: WB,ELISA	Positive Controls: WB : A549 cells, Jurkat cells
Cited Applications: WB	
Species Specificity: human, mouse, rat	
Cited Species: human	

Background Information

Notable Publications

Author	Pubmed ID	Journal	Application
Dhaval Varshney	34815422	Sci Rep	WB
Katharina Haneke	32040547	J Cell Biol	WB

Storage

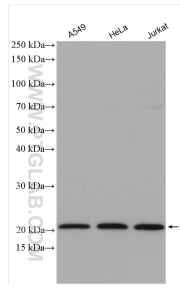
Storage:
Store at -20°C. Stable for one year after shipment.
Storage Buffer:
PBS with 0.02% sodium azide and 50% glycerol pH 7.3.
Aliquoting is unnecessary for -20°C storage

*** 20ul sizes contain 0.1% BSA

For technical support and original validation data for this product please contact:
T: 1 (888) 4PTGLAB (1-888-478-4522) (toll free in USA), or 1(312) 455-8498 (outside USA)
E: proteintech@ptglab.com
W: ptglab.com

This product is exclusively available under Proteintech Group brand and is not available to purchase from any other manufacturer.

Selected Validation Data



Various lysates were subjected to SDS PAGE followed by western blot with 14536-1-AP (RPL12 antibody) at dilution of 1:1000 incubated at room temperature for 1.5 hours.