

For Research Use Only

GSTM5 Polyclonal antibody

Catalog Number: 14502-1-AP **3 Publications**



Basic Information

Catalog Number: 14502-1-AP	GenBank Accession Number: BC058881	Purification Method: Antigen affinity purification
Size: 150ul , Concentration: 700 µg/ml by Nanodrop;	GeneID (NCBI): 2949	Recommended Dilutions: WB 1:2000-1:12000 IP 0.5-4.0 ug for IP and 1:500-1:1000 for WB
Source: Rabbit	Full Name: glutathione S-transferase mu 5	IHC 1:20-1:200
Isotype: IgG	Calculated MW: 26 kDa	IF 1:20-1:200
Immunogen Catalog Number: AG5958	Observed MW: 26 kDa	

Applications

Tested Applications: IF, IHC, IP, WB, ELISA	Positive Controls: WB : HeLa cells, rat skeletal muscle tissue, mouse testis IP : mouse skeletal muscle tissue, IHC : human heart tissue, IF : HepG2 cells,
Cited Applications: IF, IHC, WB	
Species Specificity: human, mouse, rat	
Cited Species: mouse, rat	
Note-IHC: suggested antigen retrieval with TE buffer pH 9.0; (*) Alternatively, antigen retrieval may be performed with citrate buffer pH 6.0	

Background Information

GSTM5 belongs to the GST superfamily that metabolizes a broad range of xenobiotics and carcinogens. GSTM5 is expressed in brain, testis, lung and a lesser extent in heart.

Notable Publications

Author	Pubmed ID	Journal	Application
Linlin Yang	35830924	J Proteomics	WB
Takayuki Nakajima	26342941	J Neurol Sci	WB, IHC, IF
Ijiri T WTW	24254994	Andrology	WB

Storage

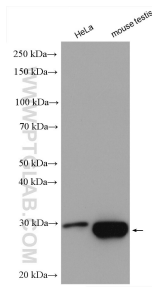
Storage:
Store at -20°C. Stable for one year after shipment.
Storage Buffer:
PBS with 0.02% sodium azide and 50% glycerol pH 7.3.
Aliquoting is unnecessary for -20°C storage

*** 20ul sizes contain 0.1% BSA

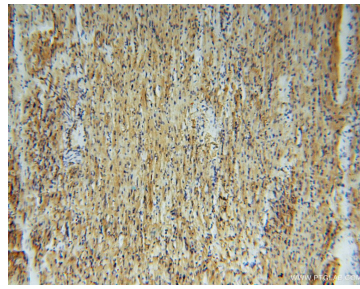
For technical support and original validation data for this product please contact:
T: 1 (888) 4PTGLAB (1-888-478-4522) (toll free in USA), or 1(312) 455-8498 (outside USA)
E: proteintech@ptglab.com
W: ptglab.com

This product is exclusively available under Proteintech Group brand and is not available to purchase from any other manufacturer.

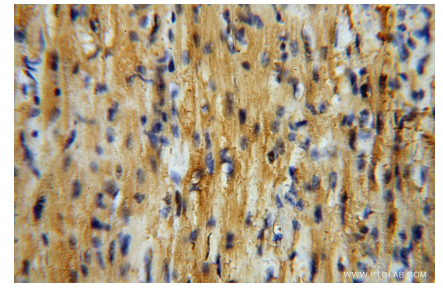
Selected Validation Data



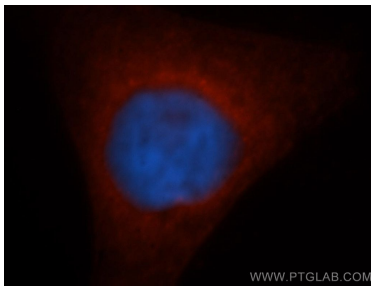
Various lysates were subjected to SDS PAGE followed by western blot with 14502-1-AP (GSTM5 antibody) at dilution of 1:6000 incubated at room temperature for 1.5 hours.



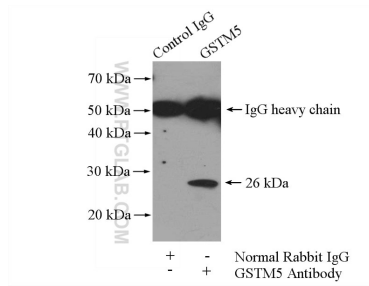
Immunohistochemical analysis of paraffin-embedded human heart using 14502-1-AP (GSTM5 antibody) at dilution of 1:50 (under 10x lens).



Immunohistochemical analysis of paraffin-embedded human heart using 14502-1-AP (GSTM5 antibody) at dilution of 1:50 (under 40x lens).



Immunofluorescent analysis of HepG2 cells, using GSTM5 antibody 14502-1-AP at 1:50 dilution and Rhodamine-labeled goat anti-rabbit IgG (red). Blue pseudocolor = DAPI (fluorescent DNA dye).



IP Result of anti-GSTM5 (IP:14502-1-AP, 4ug; Detection:14502-1-AP 1:600) with mouse skeletal muscle tissue lysate 4000ug.