

For Research Use Only

# KLHL2 Polyclonal antibody

Catalog Number: 14449-1-AP



## Basic Information

Catalog Number:

14449-1-AP

Size:

150ul , Concentration: 400 µg/ml by Nanodrop and 220 µg/ml by Bradford method using BSA as the standard;

Source:

Rabbit

Isotype:

IgG

Immunogen Catalog Number:

AG5950

GenBank Accession Number:

BC022503

GeneID (NCBI):

11275

UNIPROT ID:

O95198

Full Name:

kelch-like 2, Mayven (Drosophila)

Calculated MW:

66 kDa

Observed MW:

66 kDa

Purification Method:

Antigen affinity purification

Recommended Dilutions:

WB 1:5000-1:50000

IF 1:20-1:200

## Applications

Tested Applications:

WB, IF, ELISA

Species Specificity:

human, mouse, rat

Positive Controls:

WB : K-562 cells, human brain tissue, MCF-7 cells, SH-SY5Y cells

IF : MCF-7 cells,

## Storage

Storage:

Store at -20°C. Stable for one year after shipment.

Storage Buffer:

PBS with 0.02% sodium azide and 50% glycerol pH 7.3.

Aliquoting is unnecessary for -20°C storage

**\*\*\* 20ul sizes contain 0.1% BSA**

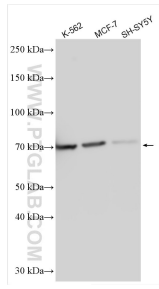
For technical support and original validation data for this product please contact:

T: 1 (888) 4PTGLAB (1-888-478-4522) (toll free in USA), or 1(312) 455-8498 (outside USA)

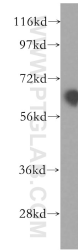
E: [proteintech@ptglab.com](mailto:proteintech@ptglab.com)  
W: [ptglab.com](http://ptglab.com)

**This product is exclusively available under Proteintech Group brand and is not available to purchase from any other manufacturer.**

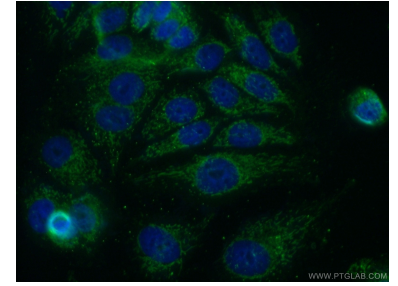
## Selected Validation Data



Various lysates were subjected to SDS PAGE followed by western blot with 14449-1-AP (KLHL2 antibody) at dilution of 1:10000 incubated at room temperature for 1.5 hours.



MCF7 cells were subjected to SDS PAGE followed by western blot with 14449-1-AP (KLHL2 antibody) at dilution of 1:500 incubated at room temperature for 1.5 hours.



Immunofluorescent analysis of MCF-7 cells using 14449-1-AP (KLHL2 antibody) at dilution of 1:50 and Alexa Fluor 488-conjugated AffiniPure Goat Anti-Rabbit IgG(H+L).