

For Research Use Only

# PPME1 Polyclonal antibody

Catalog Number: 14435-1-AP **1 Publications**



## Basic Information

<b>Catalog Number:</b> 14435-1-AP	<b>GenBank Accession Number:</b> BC050705	<b>Purification Method:</b> Antigen affinity purification
<b>Size:</b> 150ul , Concentration: 300 µg/ml by Nanodrop and 267 µg/ml by Bradford method using BSA as the standard;	<b>GeneID (NCBI):</b> 51400	<b>Recommended Dilutions:</b> WB 1:500-1:3000 IHC 1:50-1:500
<b>Source:</b> Rabbit	<b>Full Name:</b> protein phosphatase methyltransferase 1	
<b>Isotype:</b> IgG	<b>Calculated MW:</b> 42 kDa	
<b>Immunogen Catalog Number:</b> AG5817	<b>Observed MW:</b> 44 kDa	

## Applications

### Tested Applications:

IHC, WB, ELISA

### Cited Applications:

WB

### Species Specificity:

human, mouse, rat

### Cited Species:

human

**Note-IHC: suggested antigen retrieval with TE buffer pH 9.0; (\*) Alternatively, antigen retrieval may be performed with citrate buffer pH 6.0**

### Positive Controls:

**WB :** HeLa cells, mouse brain tissue, human brain tissue, fetal human brain tissue, A549 cells, rat brain tissue

**IHC :** mouse brain tissue, mouse testis tissue

## Background Information

## Notable Publications

Author	Pubmed ID	Journal	Application
Xiaowen Bi	33603756	Front Immunol	WB

## Storage

### Storage:

Store at -20°C. Stable for one year after shipment.

### Storage Buffer:

PBS with 0.02% sodium azide and 50% glycerol pH 7.3.

Aliquoting is unnecessary for -20°C storage

\*\*\* 20ul sizes contain 0.1% BSA

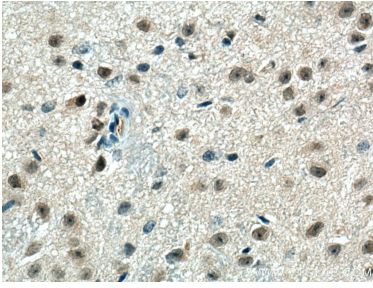
For technical support and original validation data for this product please contact:

T: 1 (888) 4PTGLAB (1-888-478-4522) (toll free in USA), or 1(312) 455-8498 (outside USA)

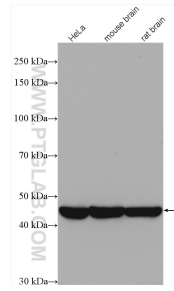
E: [proteintech@ptglab.com](mailto:proteintech@ptglab.com)  
W: [ptglab.com](http://ptglab.com)

**This product is exclusively available under Proteintech Group brand and is not available to purchase from any other manufacturer.**

## Selected Validation Data



Immunohistochemical analysis of paraffin-embedded mouse brain tissue slide using 14435-1-AP (PPME1 antibody) at dilution of 1:200 (under 40x lens). Heat mediated antigen retrieval with Tris-EDTA buffer (pH 9.0).



Various lysates were subjected to SDS PAGE followed by western blot with 14435-1-AP (PPME1 antibody) at dilution of 1:1000 incubated at room temperature for 1.5 hours.