

For Research Use Only

# MBD3 Polyclonal antibody

Catalog Number: 14258-1-AP

Featured Product

6 Publications



## Basic Information

**Catalog Number:**

14258-1-AP

**Size:**

150ul, Concentration: 400 µg/ml by Nanodrop and 293 µg/ml by Bradford method using BSA as the standard;

**Source:**

Rabbit

**Isotype:**

IgG

**Immunogen Catalog Number:**

AG5531

**GenBank Accession Number:**

BC043619

**GeneID (NCBI):**

53615

**UNIPROT ID:**

O95983

**Full Name:**

methyl-CpG binding domain protein 3

**Calculated MW:**

33 kDa

**Observed MW:**

33 kDa

**Purification Method:**

Antigen affinity purification

**Recommended Dilutions:**

WB 1:500-1:1000

IP 0.5-4.0 ug for 1.0-3.0 mg of total protein lysate

IHC 1:20-1:200

IF 1:20-1:200

## Applications

**Tested Applications:**

IF, IHC, IP, WB, ELISA

**Cited Applications:**

ChIP, IF, IHC, WB

**Species Specificity:**

human, mouse, rat

**Cited Species:**

human

**Note-IHC: suggested antigen retrieval with TE buffer pH 9.0; (\*) Alternatively, antigen retrieval may be performed with citrate buffer pH 6.0**

**Positive Controls:**

**WB:** Y79 cells, COLO 320 cells, HeLa cells, Jurkat cells, MCF-7 cells, mouse testis tissue

**IP:** mouse testis tissue,

**IHC:** human endometrial cancer tissue,

**IF:** HepG2 cells,

## Background Information

MBD3 does not bind DNA by itself. It recruits histone deacetylases and DNA methyltransferases. MBD3 acts as transcriptional repressor and plays a role in gene silencing. (PMID:9774669).

## Notable Publications

Author	Pubmed ID	Journal	Application
Shanshan Li	33014158	Oncol Lett	WB, ChIP
Xiao-Hui Wang	34103526	Nat Commun	WB
Mei-Rong Liang	31313936	Genet Test Mol Biomarkers	WB

## Storage

**Storage:**

Store at -20°C. Stable for one year after shipment.

**Storage Buffer:**

PBS with 0.02% sodium azide and 50% glycerol pH 7.3.

Aliquoting is unnecessary for -20°C storage

\*\*\* 20ul sizes contain 0.1% BSA

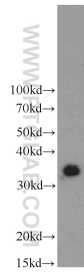
For technical support and original validation data for this product please contact:

T: 1 (888) 4PTGLAB (1-888-478-4522) (toll free in USA), or 1(312) 455-8498 (outside USA)

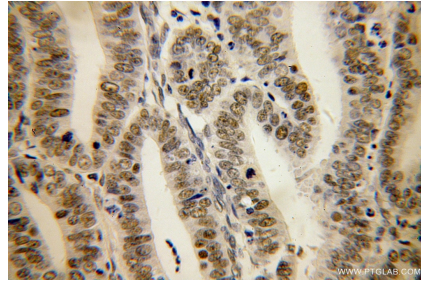
E: proteintech@ptglab.com  
W: ptglab.com

This product is exclusively available under Proteintech Group brand and is not available to purchase from any other manufacturer.

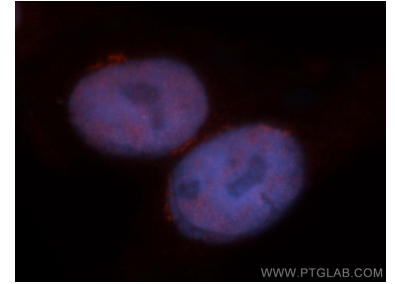
## Selected Validation Data



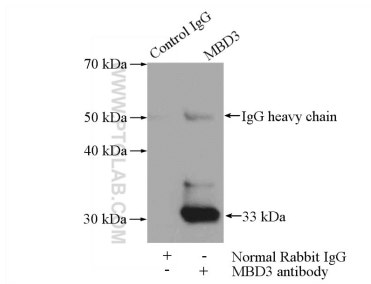
Y79 cells were subjected to SDS PAGE followed by western blot with 14258-1-AP (MBD3 antibody) at dilution of 1:600 incubated at room temperature for 1.5 hours.



Immunohistochemical analysis of paraffin-embedded human endometrial cancer using 14258-1-AP (MBD3 antibody) at dilution of 1:100 (under 40x lens).



Immunofluorescent analysis of HepG2 cells, using MBD3 antibody 14258-1-AP at 1:50 dilution and Rhodamine-labeled goat anti-rabbit IgG (red). Blue pseudocolor = DAPI (fluorescent DNA dye).



IP result of anti-MBD3 (IP:14258-1-AP, 4ug; Detection:14258-1-AP 1:800) with mouse testis tissue lysate 4000ug.