

For Research Use Only

FAM3C Polyclonal antibody

Catalog Number: 14247-1-AP **6 Publications**



Basic Information

| | | |
|--|--|--|
| Catalog Number: 14247-1-AP | GenBank Accession Number: BC046932 | Purification Method: Antigen affinity purification |
| Size: 150ul , Concentration: 600 µg/ml by Nanodrop and 366 µg/ml by Bradford method using BSA as the standard; | GeneID (NCBI): 10447 | Recommended Dilutions: WB 1:500-1:2000 IHC 1:20-1:200 |
| Source: Rabbit | Full Name: family with sequence similarity 3, member C | |
| Isotype: IgG | Calculated MW: 25 kDa | |
| Immunogen Catalog Number: AG5516 | Observed MW: 25 kDa | |

Applications

Tested Applications:

IHC, WB, ELISA

Cited Applications:

IHC, WB

Species Specificity:

human

Cited Species:

human, mouse

Note-IHC: suggested antigen retrieval with TE buffer pH 9.0; (*) Alternatively, antigen retrieval may be performed with citrate buffer pH 6.0

Positive Controls:

WB : HCT 116 cells, human brain tissue, human heart tissue, HEK-293 cells, HT-29 cells, HepG2 cells

IHC : human pancreas tissue, human stomach cancer tissue

Background Information

FAM3C, also known as ILEI, is a secreted protein belonging to the cytokine-like protein family. FAM3C is a signaling cytokine with a GG domain, hydrophobic leader sequence and an N-terminal signal peptide. A change in expression of this protein has been noted in pancreatic cancer-derived cells. FAM3C has been involved in the epithelial to mesenchymal transition, and retinal laminar formation processes in vertebrates. Also, FAM3C may play an important role in inner ear development and thus be involved in cell differentiation and proliferation during inner ear embryogenesis.

Notable Publications

| Author | Pubmed ID | Journal | Application |
|--------------|-----------|-----------------------|-------------|
| Xiaochao Tan | 34144984 | Sci Adv | WB |
| Hongyu Yuan | 35982901 | Int J Biol Sci | WB,IHC |
| Shuai Yin | 31949820 | Int J Clin Exp Pathol | IHC |

Storage

Storage:

Store at -20°C. Stable for one year after shipment.

Storage Buffer:

PBS with 0.02% sodium azide and 50% glycerol pH 7.3.

Aliquoting is unnecessary for -20°C storage

*** 20ul sizes contain 0.1% BSA

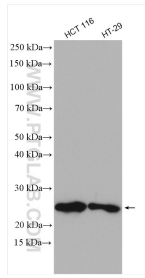
For technical support and original validation data for this product please contact:

T: 1 (888) 4PTGLAB (1-888-478-4522) (toll free in USA), or 1(312) 455-8498 (outside USA)

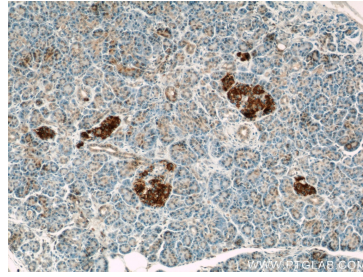
E: proteintech@ptglab.com
W: ptglab.com

This product is exclusively available under Proteintech Group brand and is not available to purchase from any other manufacturer.

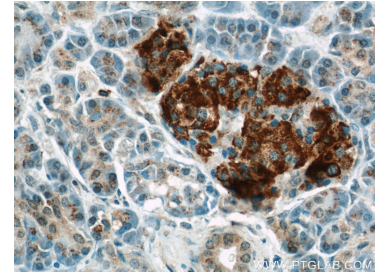
Selected Validation Data



Various lysates were subjected to SDS PAGE followed by western blot with 14247-1-AP (FAM3C antibody) at dilution of 1:1000 incubated at room temperature for 1.5 hours.



Immunohistochemical analysis of paraffin-embedded human pancreas using 14247-1-AP (FAM3C antibody) at dilution of 1:50 (under 10x lens).



Immunohistochemical analysis of paraffin-embedded human pancreas using 14247-1-AP (FAM3C antibody) at dilution of 1:50 (under 40x lens).