

For Research Use Only

# SLC27A6 Polyclonal antibody

Catalog Number: 14197-1-AP



## Basic Information

<b>Catalog Number:</b> 14197-1-AP	<b>GenBank Accession Number:</b> BC041945	<b>Purification Method:</b> Antigen affinity purification
<b>Size:</b> 150ul , Concentration: 400 µg/ml by Nanodrop;	<b>GeneID (NCBI):</b> 28965	<b>Recommended Dilutions:</b> WB 1:500-1:2000
<b>Source:</b> Rabbit	<b>Full Name:</b> solute carrier family 27 (fatty acid transporter), member 6	
<b>Isotype:</b> IgG	<b>Calculated MW:</b> 70 kDa	
<b>Immunogen Catalog Number:</b> AG5400	<b>Observed MW:</b> 70 kDa	

## Applications

<b>Tested Applications:</b> WB, ELISA	<b>Positive Controls:</b> WB : MCF-7 cells, mouse testis tissue, mouse liver tissue, mouse kidney tissue
<b>Species Specificity:</b> human, mouse	

## Background Information

SLC27A6, also known as FATP6, ACSVL2, FACVL2, belongs to the ATP-dependent AMP-binding enzyme family. SLC27A6 mediates the import of long-chain fatty acids (LCFA) into the cell by facilitating their transport at the plasma membrane (PMID: 12556534). SLC27A6 plays a pivotal role in regulating available LCFA substrates from exogenous sources in tissues undergoing high levels of beta-oxidation. SLC27A6 is strongly expressed in heart and localizes to cardiac myocytes. SLC27A6 is expressed at moderate levels in placenta, testis, and adrenal glands (PMID: 12556534).

## Storage

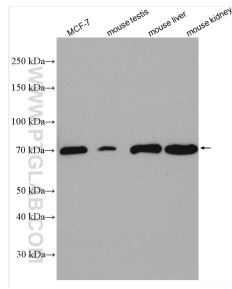
**Storage:**  
Store at -20°C. Stable for one year after shipment.  
**Storage Buffer:**  
PBS with 0.02% sodium azide and 50% glycerol pH 7.3.  
Aliquoting is unnecessary for -20°C storage

\*\*\* 20ul sizes contain 0.1% BSA

For technical support and original validation data for this product please contact:  
T: 1 (888) 4PTGLAB (1-888-478-4522) (toll free in USA), or 1(312) 455-8498 (outside USA)  
E: proteintech@ptglab.com  
W: ptglab.com

This product is exclusively available under Proteintech Group brand and is not available to purchase from any other manufacturer.

## Selected Validation Data



Various lysates were subjected to SDS PAGE followed by western blot with 14197-1-AP (SLC27A6 antibody) at dilution of 1:1000 incubated at room temperature for 1.5 hours.