

For Research Use Only

CAT-1 Polyclonal antibody

Catalog Number: 14195-1-AP

Featured Product

25 Publications



Basic Information

Catalog Number:

14195-1-AP

Size:

150ul, Concentration: 400 µg/ml by Nanodrop;

Source:

Rabbit

Isotype:

IgG

Immunogen Catalog Number:

AG5398

GenBank Accession Number:

BC063303

GeneID (NCBI):

6541

UNIPROT ID:

P30825

Full Name:

solute carrier family 7 (cationic amino acid transporter, y+ system), member 1

Calculated MW:

68 kDa

Observed MW:

67-70 kDa

Purification Method:

Antigen affinity purification

Recommended Dilutions:

WB 1:500-1:2000

IHC 1:20-1:200

Applications

Tested Applications:

WB, IHC, ELISA

Cited Applications:

WB, IF, IHC, ColP

Species Specificity:

human, mouse, rat

Cited Species:

human, rat, mouse, pig, canine

Note-IHC: suggested antigen retrieval with TE buffer pH 9.0; (*) Alternatively, antigen retrieval may be performed with citrate buffer pH 6.0

Positive Controls:

WB: mouse liver tissue, Jurkat cells, HepG2 cells, rat brain/liver tissue, mouse heart tissue, rat liver tissue

IHC: human osteosarcoma tissue,

Notable Publications

Author	Pubmed ID	Journal	Application
Ricardo A Cordova	36107759	Elife	WB
Shijing You	36131790	J Oncol	IF,IHC
Kohlhaas Christine F CF	21871446	Biochem Biophys Res Commun	WB

Storage

Storage:

Store at -20°C. Stable for one year after shipment.

Storage Buffer:

PBS with 0.02% sodium azide and 50% glycerol pH 7.3.

Aliquoting is unnecessary for -20°C storage

*** 20ul sizes contain 0.1% BSA

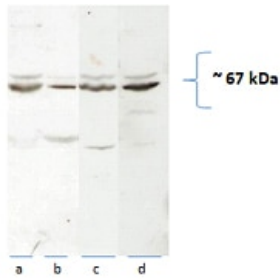
For technical support and original validation data for this product please contact:

T: 1 (888) 4PTGLAB (1-888-478-4522) (toll free in USA), or 1(312) 455-8498 (outside USA)

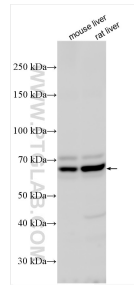
E: proteintech@ptglab.com
W: ptglab.com

This product is exclusively available under Proteintech Group brand and is not available to purchase from any other manufacturer.

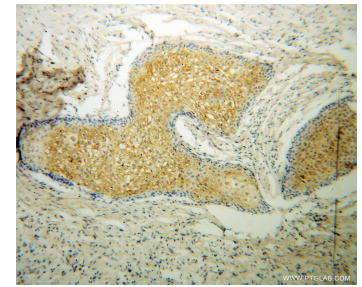
Selected Validation Data



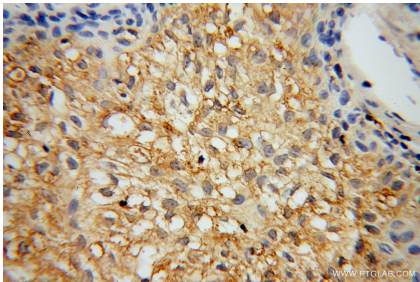
WB result of 14195-1-AP from Dilwar in Rat tissue. Rat brain (a), heart (b) liver (c) mitochondria and liver homogenate (d), (40 ug with 10% PAGE) probed with 1:1000 dilution.



Various lysates were subjected to SDS PAGE followed by western blot with 14195-1-AP (CAT-1 antibody) at dilution of 1:1000 incubated at room temperature for 1.5 hours.



Immunohistochemical analysis of paraffin-embedded human osteosarcoma using 14195-1-AP (CAT-1 antibody) at dilution of 1:100 (under 10x lens).



Immunohistochemical analysis of paraffin-embedded human osteosarcoma using 14195-1-AP (CAT-1 antibody) at dilution of 1:100 (under 40x lens).



mouse liver tissue were subjected to SDS PAGE followed by western blot with 14195-1-AP (CAT-1 antibody) at dilution of 1:800 incubated at room temperature for 1.5 hours.