

For Research Use Only

LMX1A Polyclonal antibody

Catalog Number: 14144-1-AP



Basic Information

Catalog Number: 14144-1-AP	GenBank Accession Number: BC066353	Purification Method: Antigen affinity purification
Size: 150ul , Concentration: 700 µg/ml by Nanodrop and 367 µg/ml by Bradford method using BSA as the standard;	GeneID (NCBI): 4009	Recommended Dilutions: WB 1:500-1:1000
Source: Rabbit	Full Name: LIM homeobox transcription factor 1, alpha	
Isotype: IgG	Calculated MW: 43 kDa	
Immunogen Catalog Number: AG5311	Observed MW: 43 kDa	

Applications

Tested Applications: WB, ELISA	Positive Controls: WB : mouse brain tissue, rat brain tissue
Species Specificity: mouse, rat	

Background Information

LMX1A is a transcription factor that positively regulates insulin gene transcription. LMX1A also plays a role in the development of dopamine-producing neurons during embryogenesis (PMID: 36381759). LMX1A has 2 isoforms with the molecular mass of 15 kDa (LMX1A-4AB) and 43 kDa (Isoform 1). LMX1A-4AB is expressed in testis. Isoform 1 of LMX1A is expressed in many tissues but not found in heart, liver, spleen and testis.

Storage

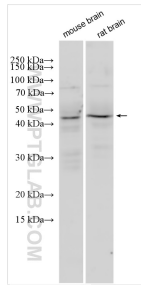
Storage:
Store at -20°C. Stable for one year after shipment.
Storage Buffer:
PBS with 0.02% sodium azide and 50% glycerol pH 7.3.
Aliquoting is unnecessary for -20°C storage

*** 20ul sizes contain 0.1% BSA

For technical support and original validation data for this product please contact:
T: 1 (888) 4PTGLAB (1-888-478-4522) (toll free in USA), or 1(312) 455-8498 (outside USA)
E: proteintech@ptglab.com
W: ptglab.com

This product is exclusively available under Proteintech Group brand and is not available to purchase from any other manufacturer.

Selected Validation Data



Various lysates were subjected to SDS PAGE followed by western blot with 14144-1-AP (LMX1A antibody) at dilution of 1:600 incubated at room temperature for 1.5 hours.