

For Research Use Only

PRRG1 Polyclonal antibody

Catalog Number: 14103-1-AP



Basic Information

Catalog Number:
14103-1-AP

Size:
150ul , Concentration: 800 µg/ml by Nanodrop and 407 µg/ml by Bradford method using BSA as the standard;

Source:
Rabbit

Isotype:
IgG

Immunogen Catalog Number:
AG5236

GenBank Accession Number:
BC060833

GeneID (NCBI):
5638

Full Name:
proline rich Gla (G-carboxyglutamic acid) 1

Calculated MW:
218 aa, 23 kDa

Observed MW:
24 kDa

Purification Method:
Antigen affinity purification

Recommended Dilutions:
WB 1:500-1:1000
IP 0.5-4.0 ug for IP and 1:200-1:1000 for WB

Applications

Tested Applications:
IP, WB, ELISA

Species Specificity:
human, mouse, rat

Positive Controls:

WB : HepG2 cells,

IP : HepG2 cells,

Background Information

Storage

Storage:

Store at -20°C. Stable for one year after shipment.

Storage Buffer:

PBS with 0.02% sodium azide and 50% glycerol pH 7.3.

Aliquoting is unnecessary for -20°C storage

***** 20ul sizes contain 0.1% BSA**

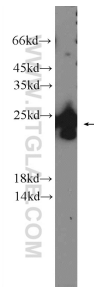
For technical support and original validation data for this product please contact:

T: 1 (888) 4PTGLAB (1-888-478-4522) (toll free in USA), or 1(312) 455-8498 (outside USA)

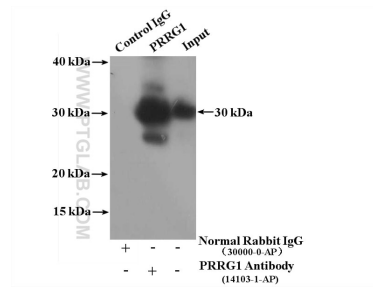
E: proteintech@ptglab.com
W: ptglab.com

This product is exclusively available under Proteintech Group brand and is not available to purchase from any other manufacturer.

Selected Validation Data



HepG2 cells were subjected to SDS PAGE followed by western blot with 14103-1-AP (PRRG1 Antibody) at dilution of 1:600 incubated at room temperature for 1.5 hours.



IP Result of anti-PRRG1 (IP:14103-1-AP, 4ug; Detection:14103-1-AP 1:300) with HepG2 cells lysate 3200ug.