

For Research Use Only

GPR116 Polyclonal antibody

Catalog Number: 14047-1-AP **2 Publications**



Basic Information

Catalog Number: 14047-1-AP	GenBank Accession Number: BC066121	Purification Method: Antigen affinity purification
Size: 150ul , Concentration: 300 µg/ml by Nanodrop and 253 µg/ml by Bradford method using BSA as the standard;	GeneID (NCBI): 221395	Recommended Dilutions: WB 1:500-1:1000 IHC 1:50-1:500
Source: Rabbit	Full Name: G protein-coupled receptor 116	
Isotype: IgG	Calculated MW: 1346 aa, 149 kDa	
Immunogen Catalog Number: AG5214	Observed MW: 149 kDa	

Applications

Tested Applications: IHC, WB, ELISA	Positive Controls: WB : HEK-293 cells, HeLa cells, Y79 cells
Cited Applications: IHC, WB	IHC : human kidney tissue,
Species Specificity: human	
Cited Species: human	

Note-IHC: suggested antigen retrieval with TE buffer pH 9.0; (*) Alternatively, antigen retrieval may be performed with citrate buffer pH 6.0

Background Information

Notable Publications

Author	Pubmed ID	Journal	Application
Li Yang	28624786	Oncotarget	WB,IHC
Tian Zheng	35049225	Medicine (Baltimore)	IHC

Storage

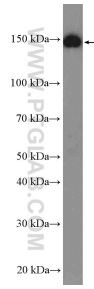
Storage:
Store at -20°C. Stable for one year after shipment.
Storage Buffer:
PBS with 0.02% sodium azide and 50% glycerol pH 7.3.
Aliquoting is unnecessary for -20°C storage

***** 20ul sizes contain 0.1% BSA**

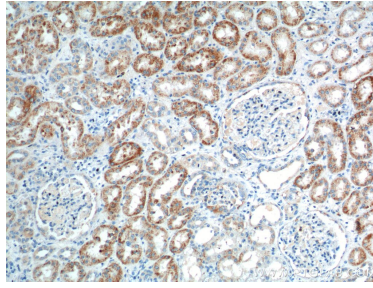
For technical support and original validation data for this product please contact:
T: 1 (888) 4PTGLAB (1-888-478-4522) (toll free in USA), or 1(312) 455-8498 (outside USA) E: proteintech@ptglab.com W: ptglab.com

This product is exclusively available under Proteintech Group brand and is not available to purchase from any other manufacturer.

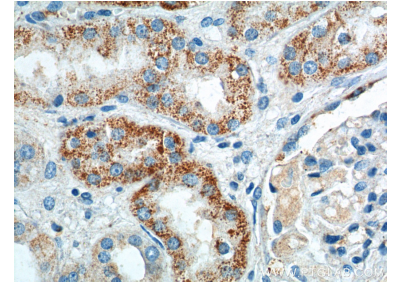
Selected Validation Data



HEK-293 cells were subjected to SDS PAGE followed by western blot with 14047-1-AP (GPR116 Antibody) at dilution of 1:600 incubated at 4 degree celsius over night.



Immunohistochemical analysis of paraffin-embedded human kidney tissue slide using 14047-1-AP (GPR116 Antibody) at dilution of 1:100 (under 10x lens).



Immunohistochemical analysis of paraffin-embedded human kidney tissue slide using 14047-1-AP (GPR116 Antibody) at dilution of 1:100 (under 40x lens).