

For Research Use Only

ROD1 Polyclonal antibody

Catalog Number: 14027-1-AP

Featured Product

5 Publications



Basic Information

Catalog Number: 14027-1-AP	GenBank Accession Number: BC044585	Purification Method: Antigen affinity purification
Size: 150ul , Concentration: 700 µg/ml by Nanodrop;	GeneID (NCBI): 9991	Recommended Dilutions: WB 1:2000-1:12000 IHC 1:20-1:200
Source: Rabbit	Full Name: ROD1 regulator of differentiation 1 (S. pombe)	
Isotype: IgG	Calculated MW: 60 kDa	
Immunogen Catalog Number: AG5172	Observed MW: 50 kDa	

Applications

Tested Applications:
IHC, WB, ELISA

Cited Applications:
CoIP, IHC, WB

Species Specificity:
human, mouse, rat

Cited Species:
human, mouse

Note-IHC: suggested antigen retrieval with TE buffer pH 9.0; (*) Alternatively, antigen retrieval may be performed with citrate buffer pH 6.0

Positive Controls:

WB: HL-60 cells, mouse thymus tissue, HeLa cells, Jurkat cells, rat thymus tissue

IHC: human lymphoma tissue,

Background Information

Notable Publications

Author	Pubmed ID	Journal	Application
Qiong Wu	32477006	Cancer Cell Int	WB,IHC
Ya Zhou	30013660	Oncol Lett	WB
Yingji Chen	35016691	Cancer Cell Int	WB

Storage

Storage:

Store at -20°C. Stable for one year after shipment.

Storage Buffer:

PBS with 0.02% sodium azide and 50% glycerol pH 7.3.

Aliquoting is unnecessary for -20°C storage

*** 20ul sizes contain 0.1% BSA

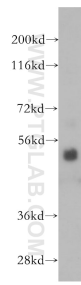
For technical support and original validation data for this product please contact:

T: 1 (888) 4PTGLAB (1-888-478-4522) (toll free in USA), or 1(312) 455-8498 (outside USA)

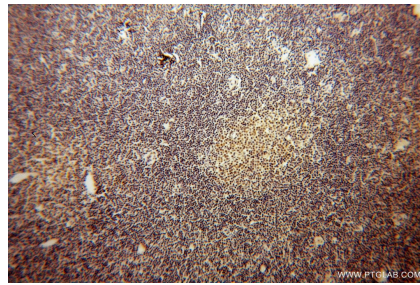
E: proteintech@ptglab.com
W: ptglab.com

This product is exclusively available under Proteintech Group brand and is not available to purchase from any other manufacturer.

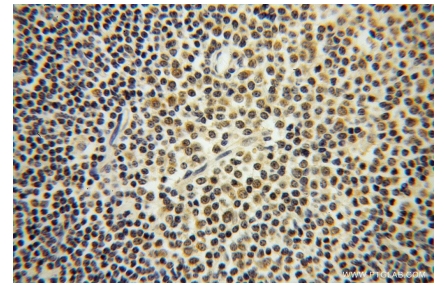
Selected Validation Data



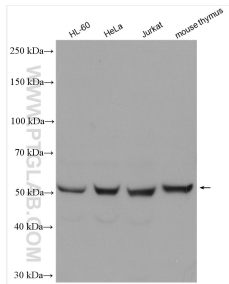
HL-60 cells were subjected to SDS PAGE followed by western blot with 14027-1-AP (ROD1 antibody) at dilution of 1:500 incubated at room temperature for 1.5 hours.



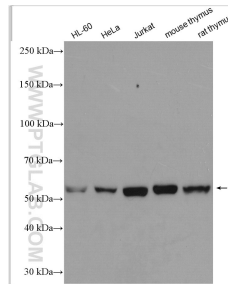
Immunohistochemical analysis of paraffin-embedded human lymphoma using 14027-1-AP (ROD1 antibody) at dilution of 1:100 (under 10x lens).



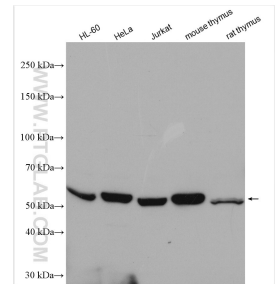
Immunohistochemical analysis of paraffin-embedded human lymphoma using 14027-1-AP (ROD1 antibody) at dilution of 1:100 (under 40x lens).



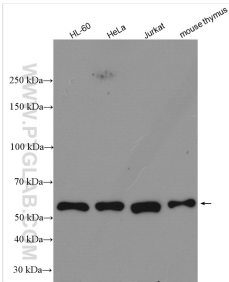
Various lysates were subjected to SDS PAGE followed by western blot with 14027-1-AP (ROD1 antibody) at dilution of 1:6000 incubated at room temperature for 1.5 hours.



Various lysates were subjected to SDS PAGE followed by western blot with 14027-1-AP (ROD1 antibody) at dilution of 1:6000 incubated at room temperature for 1.5 hours.



Various lysates were subjected to SDS PAGE followed by western blot with 14027-1-AP (ROD1 antibody) at dilution of 1:6000 incubated at room temperature for 1.5 hours.



Various lysates subjected to SDS PAGE followed by western blot with 14027-1-AP (ROD1 antibody) at dilution of 1:6000 incubated at room temperature for 1.5 hours.