

For Research Use Only

RBM17 Polyclonal antibody

Catalog Number: 13918-1-AP **2 Publications**



Basic Information

Catalog Number: 13918-1-AP	GenBank Accession Number: BC039322	Purification Method: Antigen affinity purification
Size: 150ul , Concentration: 850 µg/ml by Nanodrop and 400 µg/ml by Bradford method using BSA as the standard;	GeneID (NCBI): 84991	Recommended Dilutions: WB 1:1000-1:6000 IF 1:20-1:200
Source: Rabbit	UNIPROT ID: Q96125	
Isotype: IgG	Full Name: RNA binding motif protein 17	
Immunogen Catalog Number: AG4921	Calculated MW: 401 aa, 45 kDa	
	Observed MW: 45 kDa	

Applications

Tested Applications: WB, IF, ELISA	Positive Controls:
Cited Applications: WB	WB : BxPC-3 cells, MCF-7 cells, HeLa cells, A2780 cells, PC-3 cells
Species Specificity: human, mouse, rat	IF : HeLa cells,
Cited Species: human, mouse	

Background Information

RNA-binding motif protein 17 (RBM17), also named splicing factor 45, was first identified as a member of the spliceosome. RBM17 expression is low in normal tissues but is overexpressed in several forms of cancer, including breast, ovarian and prostate.

Notable Publications

Author	Pubmed ID	Journal	Application
Sean-Patrick Riechers	26908611	Hum Mol Genet	WB
Dongni Chen	35365208	J Exp Clin Cancer Res	WB

Storage

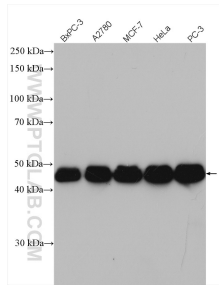
Storage:
Store at -20°C. Stable for one year after shipment.
Storage Buffer:
PBS with 0.02% sodium azide and 50% glycerol pH 7.3.
Aliquoting is unnecessary for -20°C storage

*** 20ul sizes contain 0.1% BSA

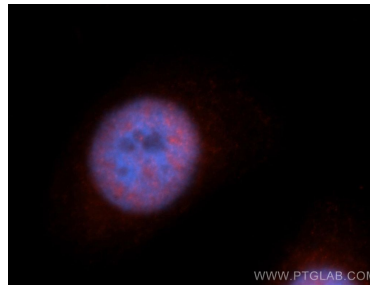
For technical support and original validation data for this product please contact:
T: 1 (888) 4PTGLAB (1-888-478-4522) (toll free in USA), or 1(312) 455-8498 (outside USA)
E: proteintech@ptglab.com
W: ptglab.com

This product is exclusively available under Proteintech Group brand and is not available to purchase from any other manufacturer.

Selected Validation Data



Various lysates were subjected to SDS PAGE followed by western blot with 13918-1-AP (RBM17 antibody) at dilution of 1:3000 incubated at room temperature for 1.5 hours.



Immunofluorescent analysis of HeLa cells, using RBM17 antibody 13918-1-AP at 1:50 dilution and Rhodamine-labeled goat anti-rabbit IgG (red). Blue pseudocolor = DAPI (fluorescent DNA dye).