

For Research Use Only

SPAG8 Polyclonal antibody

Catalog Number: 13915-1-AP **2 Publications**



Basic Information

Catalog Number: 13915-1-AP	GenBank Accession Number: BC019247	Purification Method: Antigen affinity purification
Size: 150ul, Concentration: 450 µg/ml by Nanodrop and 193 µg/ml by Bradford method using BSA as the standard;	GeneID (NCBI): 26206	Recommended Dilutions: WB 1:500-1:1000 IP 0.5-4.0 ug for IP and 1:500-1:1000 for WB
Source: Rabbit	Full Name: sperm associated antigen 8	IHC 1:20-1:200
Isotype: IgG	Calculated MW: 45 kDa, 54 kDa	IF 1:50-1:500
Immunogen Catalog Number: AG4910	Observed MW: 56-70 kDa	

Applications

Tested Applications: IF, IHC, IP, WB, ELISA	Positive Controls: WB : DU 145 cells, IP : mouse testis tissue, IHC : human prostate cancer tissue, IF : PC-3 cells,
Cited Applications: IHC, WB	
Species Specificity: human, mouse, rat	
Cited Species: human, mouse	
Note-IHC: suggested antigen retrieval with TE buffer pH 9.0; (*) Alternatively, antigen retrieval may be performed with citrate buffer pH 6.0	

Background Information

SPAG8, also named as Sperm-associated antigen 8 or HSD-1, is a 426 amino acid protein, which is expressed in testis (germ cells), but not in liver, kidney, prostate and small intestine. SPAG8 may play a role in fertility and microtubule formation through interaction with RANBP9. SPAG8 as testis-specific protein is produced during male germ cell differentiation and functions in a germ cell type- and stage-specific manner during spermatogenesis.

Notable Publications

Author	Pubmed ID	Journal	Application
Gina Esther Merges	35608054	Development	WB
Siliṡa Karīna K	21150711	J Immunother	IHC

Storage

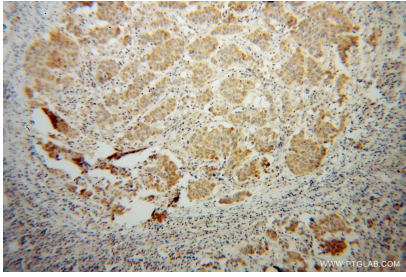
Storage:
Store at -20°C. Stable for one year after shipment.
Storage Buffer:
PBS with 0.02% sodium azide and 50% glycerol pH 7.3.
Aliquoting is unnecessary for -20°C storage

*** 20ul sizes contain 0.1% BSA

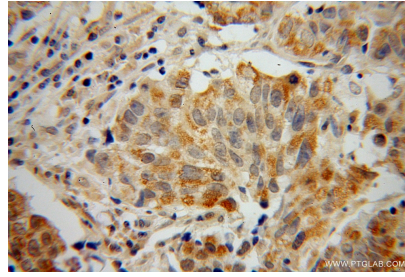
For technical support and original validation data for this product please contact:
T: 1 (888) 4PTGLAB (1-888-478-4522) (toll free in USA), or 1(312) 455-8498 (outside USA)
E: proteintech@ptglab.com
W: ptglab.com

This product is exclusively available under Proteintech Group brand and is not available to purchase from any other manufacturer.

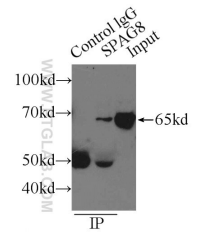
Selected Validation Data



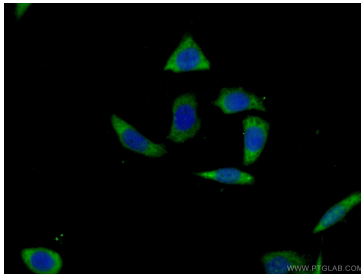
Immunohistochemical analysis of paraffin-embedded human prostate cancer using 13915-1-AP (SPAG8 antibody) at dilution of 1:100 (under 10x lens).



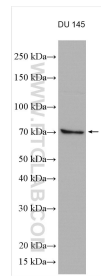
Immunohistochemical analysis of paraffin-embedded human prostate cancer using 13915-1-AP (SPAG8 antibody) at dilution of 1:100 (under 40x lens).



IP Result of anti-SPAG8 (IP:13915-1-AP, 3ug; Detection:13915-1-AP 1:500) with mouse testis tissue lysate 6000ug.



Immunofluorescent analysis of (-20°C Ethanol) fixed PC-3 cells using 13915-1-AP (SPAG8 antibody) at dilution of 1:50 and Alexa Fluor 488-conjugated AffiniPure Goat Anti-Rabbit IgG(H+L).



DU 145 cells lysates were subjected to SDS PAGE followed by western blot with 13915-1-AP (SPAG8 antibody) at dilution of 1:600 incubated at room temperature for 1.5 hours.