

For Research Use Only

# DCP1B Polyclonal antibody

Catalog Number: 13863-1-AP **1 Publications**



## Basic Information

<b>Catalog Number:</b> 13863-1-AP	<b>GenBank Accession Number:</b> BC043437	<b>Purification Method:</b> Antigen affinity purification
<b>Size:</b> 150ul, Concentration: 700 µg/ml by Nanodrop and 347 µg/ml by Bradford method using BSA as the standard;	<b>GeneID (NCBI):</b> 196513	<b>Recommended Dilutions:</b> WB 1:1000-1:6000 IP 0.5-4.0 ug for IP and 1:500-1:1000 for WB
<b>Source:</b> Rabbit	<b>Full Name:</b> DCP1 decapping enzyme homolog B (S. cerevisiae)	<b>IHC 1:20-1:200</b> <b>IF 1:20-1:200</b>
<b>Isotype:</b> IgG	<b>Calculated MW:</b> 618 aa, 68 kDa	
<b>Immunogen Catalog Number:</b> AG4845	<b>Observed MW:</b> 68 kDa	

## Applications

<b>Tested Applications:</b> IF, IHC, IP, WB, ELISA	<b>Positive Controls:</b> <b>WB:</b> mouse liver tissue, HeLa cells, human liver tissue, Jurkat cells, rat liver tissue, rat spleen tissue
<b>Cited Applications:</b> IF	<b>IP:</b> HeLa cells,
<b>Species Specificity:</b> human, mouse, rat	<b>IHC:</b> human liver cancer tissue,
<b>Note-IHC: suggested antigen retrieval with TE buffer pH 9.0; (*) Alternatively, antigen retrieval may be performed with citrate buffer pH 6.0</b>	<b>IF:</b> A549 cells, HeLa cells

## Background Information

DCP1B belongs to DCP1 family. DCP1B may play a role in the degradation of mRNAs, both in normal mRNA turnover and in nonsense-mediated mRNA decay. It may remove the 7-methyl guanine cap structure mRNA molecules, yielding a 5'-phosphorylated mRNA fragment and 7m-GDP. DCP1B has 2 isoforms with the molecular mass of 56 and 68 kDa. DCP1B is associated with DM-related atherogenesis (PMID:33195466).

## Notable Publications

Author	Pubmed ID	Journal	Application
Yangchao Dong	25872476	Int J Mol Med	IF

## Storage

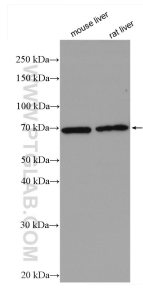
**Storage:**  
Store at -20°C. Stable for one year after shipment.  
**Storage Buffer:**  
PBS with 0.02% sodium azide and 50% glycerol pH 7.3.  
Aliquoting is unnecessary for -20°C storage

\*\*\* 20ul sizes contain 0.1% BSA

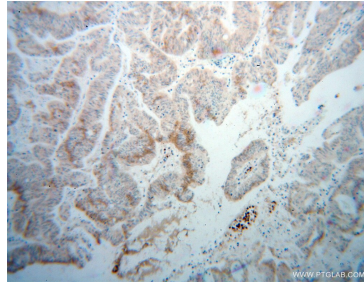
For technical support and original validation data for this product please contact:  
T: 1 (888) 4PTGLAB (1-888-478-4522) (toll free in USA), or 1(312) 455-8498 (outside USA)  
E: proteintech@ptglab.com  
W: ptglab.com

This product is exclusively available under Proteintech Group brand and is not available to purchase from any other manufacturer.

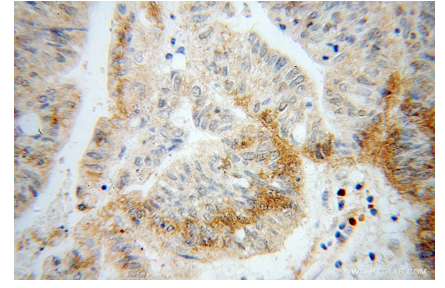
## Selected Validation Data



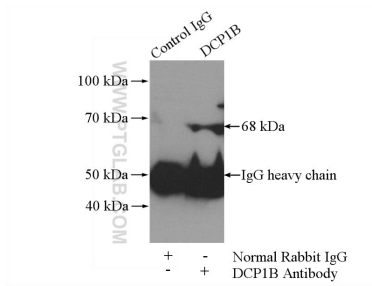
Various lysates were subjected to SDS PAGE followed by western blot with 13863-1-AP (DCP1B antibody) at dilution of 1:3000 incubated at room temperature for 1.5 hours.



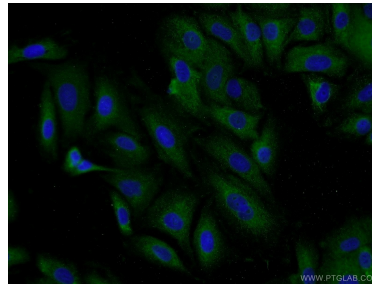
Immunohistochemical analysis of paraffin-embedded human liver cancer using 13863-1-AP (DCP1B antibody) at dilution of 1:100 (under 10x lens).



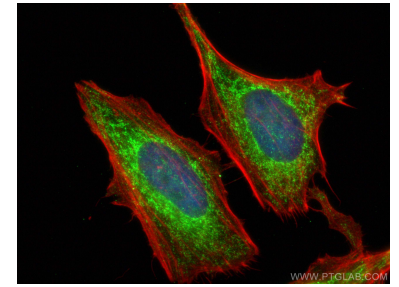
Immunohistochemical analysis of paraffin-embedded human liver cancer using 13863-1-AP (DCP1B antibody) at dilution of 1:100 (under 40x lens).



IP Result of anti-DCP1B (IP:13863-1-AP, 4 $\mu$ g; Detection:13863-1-AP 1:500) with HeLa cells lysate 1520 $\mu$ g.



Immunofluorescent analysis of A549 cells using 13863-1-AP (DCP1B antibody) at dilution of 1:50 and Alexa Fluor 488-conjugated AffiniPure Goat Anti-Rabbit IgG(H+L).



Immunofluorescent analysis of (4% PFA) fixed HeLa cells using DCP1B antibody (13863-1-AP) at dilution of 1:400 and CoraLite@488-Conjugated AffiniPure Goat Anti-Rabbit IgG(H+L), CL594-phalloidin (red).