

For Research Use Only

SETX Polyclonal antibody

Catalog Number: 13837-1-AP **1 Publications**



Basic Information

Catalog Number: 13837-1-AP	GenBank Accession Number: BC032600	Purification Method: Antigen affinity purification
Size: 150ul , Concentration: 350 µg/ml by Nanodrop and 560 µg/ml by Bradford method using BSA as the standard;	GeneID (NCBI): 23064	Recommended Dilutions: WB 1:500-1:1000
Source: Rabbit	Full Name: senataxin	
Isotype: IgG	Calculated MW: 2677 aa, 303 kDa	
Immunogen Catalog Number: AG4785	Observed MW: 300 kDa	

Applications

Tested Applications: WB, ELISA	Positive Controls: WB : HeLa cells,
Cited Applications: WB	
Species Specificity: human	
Cited Species: human	

Background Information

SETX is involved in DNA double-strand breaks damage response generated by oxidative stress (PMID:17562789). It might also plays a role in the development and maturation of germ cells.

Notable Publications

Author	Pubmed ID	Journal	Application
Sarina Han	30583862	Biochem Biophys Res Commun	WB

Storage

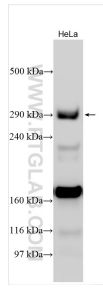
Storage:
Store at -20°C. Stable for one year after shipment.
Storage Buffer:
PBS with 0.02% sodium azide and 50% glycerol pH 7.3.
Aliquoting is unnecessary for -20°C storage

***** 20ul sizes contain 0.1% BSA**

For technical support and original validation data for this product please contact:
T: 1 (888) 4PTGLAB (1-888-478-4522) (toll free in USA), or 1(312) 455-8498 (outside USA)
E: proteintech@ptglab.com
W: ptglab.com

This product is exclusively available under Proteintech Group brand and is not available to purchase from any other manufacturer.

Selected Validation Data



Various lysates were subjected to SDS PAGE followed by western blot with 13837-1-AP (SETX antibody) at dilution of 1:500 incubated at room temperature for 1.5 hours.