

For Research Use Only

DIXDC1 Polyclonal antibody

Catalog Number: 13816-1-AP **1 Publications**



Basic Information

Catalog Number: 13816-1-AP	GenBank Accession Number: BC033034	Purification Method: Antigen affinity purification
Size: 150ul , Concentration: 450 µg/ml by Nanodrop and 267 µg/ml by Bradford method using BSA as the standard;	GeneID (NCBI): 85458	Recommended Dilutions: WB 1:500-1:3000 IHC 1:50-1:500
Source: Rabbit	Full Name: DIX domain containing 1	
Isotype: IgG	Calculated MW: 683 aa, 77 kDa	
Immunogen Catalog Number: AG4904	Observed MW: 70-75 kDa	

Applications

Tested Applications: IHC, WB, ELISA	Positive Controls: WB : mouse skeletal muscle tissue, mouse heart tissue
Cited Applications: WB	IHC : human heart tissue, human kidney tissue, human testis tissue, human skin tissue, human lung tissue, human ovary tissue
Species Specificity: human, mouse	
Cited Species: rat	
Note-IHC: suggested antigen retrieval with TE buffer pH 9.0; (*) Alternatively, antigen retrieval may be performed with citrate buffer pH 6.0	

Background Information

Notable Publications

Author	Pubmed ID	Journal	Application
Jérémy Willekens	29804229	Mol Neurobiol	WB

Storage

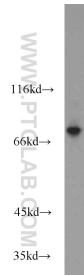
Storage:
Store at -20°C. Stable for one year after shipment.
Storage Buffer:
PBS with 0.02% sodium azide and 50% glycerol pH 7.3.
Aliquoting is unnecessary for -20°C storage

*** 20ul sizes contain 0.1% BSA

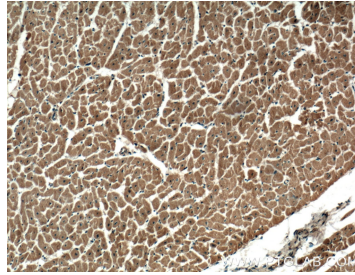
For technical support and original validation data for this product please contact:
T: 1 (888) 4PTGLAB (1-888-478-4522) (toll free in USA), or 1(312) 455-8498 (outside USA)
E: proteintech@ptglab.com
W: ptglab.com

This product is exclusively available under Proteintech Group brand and is not available to purchase from any other manufacturer.

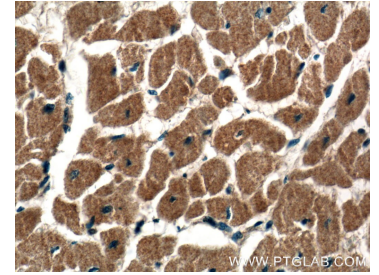
Selected Validation Data



mouse skeletal muscle tissue were subjected to SDS PAGE followed by western blot with 13816-1-AP (DIXDC1 antibody) at dilution of 1:1500 incubated at room temperature for 1.5 hours.



Immunohistochemical analysis of paraffin-embedded human heart tissue slide using 13816-1-AP (DIXDC1 antibody) at dilution of 1:200 (under 10x lens).



Immunohistochemical analysis of paraffin-embedded human heart tissue slide using 13816-1-AP (DIXDC1 antibody) at dilution of 1:200 (under 40x lens).