

For Research Use Only

CDC14A Polyclonal antibody

Catalog Number: 13660-1-AP **1 Publications**



Basic Information

Catalog Number: 13660-1-AP	GenBank Accession Number: BC038979	Purification Method: Antigen affinity purification
Size: 150ul , Concentration: 200 µg/ml by Nanodrop and 133 µg/ml by Bradford method using BSA as the standard;	GeneID (NCBI): 8556	Recommended Dilutions: WB 1:500-1:2000
Source: Rabbit	Full Name: CDC14 cell division cycle 14 homolog A (S. cerevisiae)	
Isotype: IgG	Calculated MW: 594 aa, 66 kDa	
Immunogen Catalog Number: AG4556	Observed MW: 66 kDa	

Applications

Tested Applications: WB, ELISA	Positive Controls: WB : human heart tissue, human brain tissue, HeLa cells, COLO 320 cells
Cited Applications: WB	
Species Specificity: human, mouse, rat	
Cited Species: mouse	

Background Information

Notable Publications

Author	Pubmed ID	Journal	Application
Haiying Hu	31545409	Mol Med Rep	WB

Storage

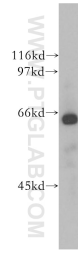
Storage:
Store at -20°C. Stable for one year after shipment.
Storage Buffer:
PBS with 0.02% sodium azide and 50% glycerol pH 7.3.
Aliquoting is unnecessary for -20°C storage

*** 20ul sizes contain 0.1% BSA

For technical support and original validation data for this product please contact:
T: 1 (888) 4PTGLAB (1-888-478-4522) (toll free in USA), or 1(312) 455-8498 (outside USA)
E: proteintech@ptglab.com
W: ptglab.com

This product is exclusively available under Proteintech Group brand and is not available to purchase from any other manufacturer.

Selected Validation Data



human heart tissue were subjected to SDS PAGE followed by western blot with 13660-1-AP (CDC 14A antibody) at dilution of 1:500 incubated at room temperature for 1.5 hours.