

For Research Use Only

# EML2 Polyclonal antibody

Catalog Number: 13529-1-AP **2 Publications**



## Basic Information

<b>Catalog Number:</b> 13529-1-AP	<b>GenBank Accession Number:</b> BC032630	<b>Purification Method:</b> Antigen affinity purification
<b>Size:</b> 150ul , Concentration: 300 µg/ml by Nanodrop and 200 µg/ml by Bradford method using BSA as the standard;	<b>GeneID (NCBI):</b> 24139	<b>Recommended Dilutions:</b> WB 1:500-1:2000 IHC 1:20-1:200
<b>Source:</b> Rabbit	<b>Full Name:</b> echinoderm microtubule associated protein like 2	
<b>Isotype:</b> IgG	<b>Calculated MW:</b> 71 kDa	
<b>Immunogen Catalog Number:</b> AG4423	<b>Observed MW:</b> 71 kDa	

## Applications

<b>Tested Applications:</b> IHC, WB, ELISA	<b>Positive Controls:</b>
<b>Cited Applications:</b> IF, WB	<b>WB :</b> mouse heart tissue, mouse stomach tissue
<b>Species Specificity:</b> human, mouse	<b>IHC :</b> human prostate cancer tissue,
<b>Cited Species:</b> human, mouse	

**Note-IHC: suggested antigen retrieval with TE buffer pH 9.0; (\*) Alternatively, antigen retrieval may be performed with citrate buffer pH 6.0**

## Background Information

### Notable Publications

Author	Pubmed ID	Journal	Application
Sandeep Aryal	31797049	Hum Genet	IF
Takashi Hotta	35963242	Curr Biol	WB,IF

## Storage

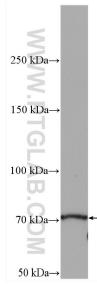
**Storage:**  
Store at -20°C. Stable for one year after shipment.  
**Storage Buffer:**  
PBS with 0.02% sodium azide and 50% glycerol pH 7.3.  
Aliquoting is unnecessary for -20°C storage

**\*\*\* 20ul sizes contain 0.1% BSA**

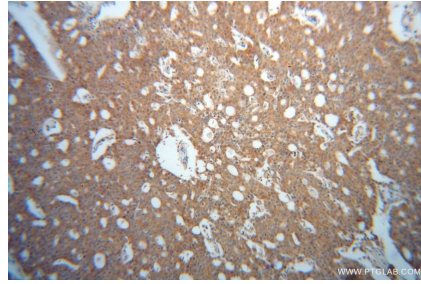
For technical support and original validation data for this product please contact:  
T: 1 (888) 4PTGLAB (1-888-478-4522) (toll free in USA), or 1(312) 455-8498 (outside USA)  
E: proteintech@ptglab.com  
W: ptglab.com

**This product is exclusively available under Proteintech Group brand and is not available to purchase from any other manufacturer.**

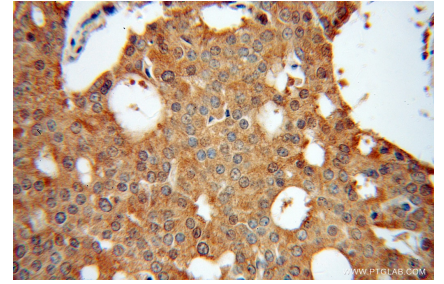
## Selected Validation Data



mouse heart tissue were subjected to SDS PAGE followed by western blot with 13529-1-AP (EML2 antibody) at dilution of 1:1000 incubated at room temperature for 1.5 hours.



Immunohistochemical analysis of paraffin-embedded human prostate cancer using 13529-1-AP (EML2 antibody) at dilution of 1:100 (under 10x lens).



Immunohistochemical analysis of paraffin-embedded human prostate cancer using 13529-1-AP (EML2 antibody) at dilution of 1:100 (under 40x lens).