

For Research Use Only

# MAPK15 Polyclonal antibody

Catalog Number: 13452-1-AP **1 Publications**



## Basic Information

<b>Catalog Number:</b> 13452-1-AP	<b>GenBank Accession Number:</b> BC028034	<b>Purification Method:</b> Antigen affinity purification
<b>Size:</b> 150ul , Concentration: 450 µg/ml by Nanodrop and 333 µg/ml by Bradford method using BSA as the standard;	<b>GeneID (NCBI):</b> 225689	<b>Recommended Dilutions:</b> WB 1:500-1:2000 IP 0.5-4.0 ug for IP and 1:500-1:1000 for WB
<b>Source:</b> Rabbit	<b>Full Name:</b> mitogen-activated protein kinase 15	<b>Calculated MW:</b> 544 aa, 60 kDa
<b>Isotype:</b> IgG	<b>Observed MW:</b> 60 kDa	<b>Immunogen Catalog Number:</b> AG4255

## Applications

<b>Tested Applications:</b> IHC, IP, WB, ELISA	<b>Positive Controls:</b> WB : mouse lung tissue, IP : mouse lung tissue, IHC : human kidney tissue,
<b>Cited Applications:</b> WB	
<b>Species Specificity:</b> human, mouse, rat	
<b>Cited Species:</b> human	

**Note-IHC: suggested antigen retrieval with TE buffer pH 9.0; (\*) Alternatively, antigen retrieval may be performed with citrate buffer pH 6.0**

## Background Information

### Notable Publications

Author	Pubmed ID	Journal	Application
Zexin Su	32565938	Oncol Lett	WB

## Storage

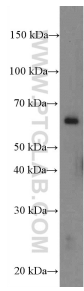
**Storage:**  
Store at -20°C. Stable for one year after shipment.  
**Storage Buffer:**  
PBS with 0.02% sodium azide and 50% glycerol pH 7.3.  
Aliquoting is unnecessary for -20°C storage

\*\*\* 20ul sizes contain 0.1% BSA

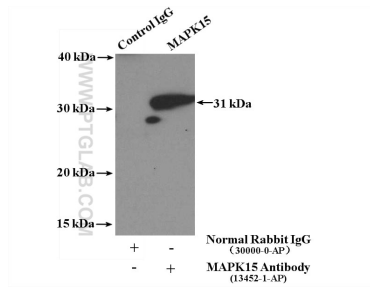
For technical support and original validation data for this product please contact:  
T: 1 (888) 4PTGLAB (1-888-478-4522) (toll free in USA), or 1(312) 455-8498 (outside USA)  
E: proteintech@ptglab.com  
W: ptglab.com

This product is exclusively available under Proteintech Group brand and is not available to purchase from any other manufacturer.

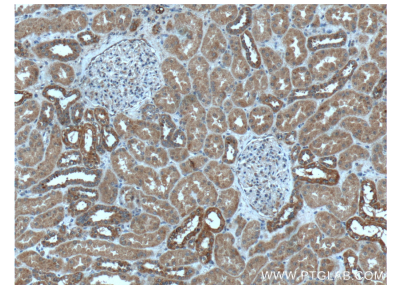
## Selected Validation Data



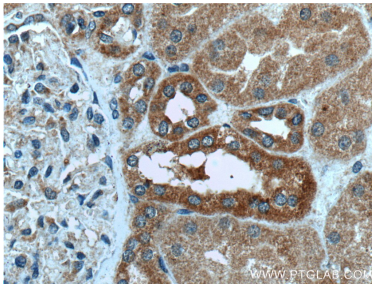
mouse lung tissue were subjected to SDS PAGE followed by western blot with 13452-1-AP (MAPK15 Antibody) at dilution of 1:1000 incubated at room temperature for 1.5 hours.



IP Result of anti-MAPK15 (IP:13452-1-AP, 4ug; Detection:13452-1-AP 1:500) with mouse lung tissue lysate 3800ug.



Immunohistochemical analysis of paraffin-embedded human kidney tissue slide using 13452-1-AP (MAPK15 antibody) at dilution of 1:200 (under 10x lens).



Immunohistochemical analysis of paraffin-embedded human kidney tissue slide using 13452-1-AP (MAPK15 antibody) at dilution of 1:200 (under 40x lens).