

For Research Use Only

# GCET2 Polyclonal antibody

Catalog Number: 13447-1-AP



## Basic Information

<b>Catalog Number:</b> 13447-1-AP	<b>GenBank Accession Number:</b> BC030506	<b>Purification Method:</b> Antigen affinity purification
<b>Size:</b> 150ul , Concentration: 800 µg/ml by Nanodrop and 360 µg/ml by Bradford method using BSA as the standard;	<b>GeneID (NCBI):</b> 257144	<b>Recommended Dilutions:</b> WB 1:200-1:1000
<b>Source:</b> Rabbit	<b>Full Name:</b> germinal center expressed transcript 2	
<b>Isotype:</b> IgG	<b>Calculated MW:</b> 178 aa, 21 kDa	
<b>Immunogen Catalog Number:</b> AG4280	<b>Observed MW:</b> 25 kDa	

## Applications

<b>Tested Applications:</b> WB,ELISA	<b>Positive Controls:</b> WB : Raji cells,
<b>Species Specificity:</b> human	

## Background Information

GCET2, also named HGAL, is a newly gene that has been shown to be a useful marker for germinal centre (GC) B cells and GC B-cell derived malignancies, including follicular lymphomas and germinal centre B cell-like diffuse large B-cell lymphomas (GCB-DLBCLs), and is a useful prognosticator for DLBCLs. GCET2 may be an adaptor protein in GC B cells that transduces signals from GC B-cell membrane to the cytosol via its association with GRB2.

## Storage

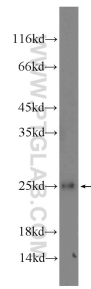
**Storage:**  
Store at -20°C. Stable for one year after shipment.  
**Storage Buffer:**  
PBS with 0.02% sodium azide and 50% glycerol pH 7.3.  
Aliquoting is unnecessary for -20°C storage

\*\*\* 20ul sizes contain 0.1% BSA

For technical support and original validation data for this product please contact:  
T: 1 (888) 4PTGLAB (1-888-478-4522) (toll free in USA), or 1(312) 455-8498 (outside USA)  
E: proteintech@ptglab.com  
W: ptglab.com

This product is exclusively available under Proteintech Group brand and is not available to purchase from any other manufacturer.

## Selected Validation Data



Raji cells were subjected to SDS PAGE followed by western blot with 13447-1-AP (GCET2 Antibody) at dilution of 1:300 incubated at room temperature for 1.5 hours.