

For Research Use Only

# ALS2CR8 Polyclonal antibody

Catalog Number: 13434-1-AP



## Basic Information

|  |  |  |
|--|--|--|
| <b>Catalog Number:</b><br>13434-1-AP   | <b>GenBank Accession Number:</b><br>BC033777   | <b>Purification Method:</b><br>Antigen affinity purification |
| <b>Size:</b><br>150ul , Concentration: 550 µg/ml by Nanodrop and 260 µg/ml by Bradford method using BSA as the standard; | <b>GeneID (NCBI):</b><br>79800   | <b>Recommended Dilutions:</b><br>IHC 1:20-1:200              |
| <b>Source:</b><br>Rabbit   | <b>Full Name:</b><br>amyotrophic lateral sclerosis 2 (juvenile) chromosome region, candidate 8 |  |
| <b>Isotype:</b><br>IgG   | <b>Calculated MW:</b><br>725 aa, 81 kDa  |  |
| <b>Immunogen Catalog Number:</b><br>AG4238   |  |  |

## Applications

|  |   |
|--|---|
| <b>Tested Applications:</b><br>IHC, ELISA  | <b>Positive Controls:</b><br>IHC : human testis tissue, |
| <b>Species Specificity:</b><br>human   |   |
| <b>Note-IHC: suggested antigen retrieval with TE buffer pH 9.0; (*) Alternatively, antigen retrieval may be performed with citrate buffer pH 6.0</b> |   |

## Background Information

### Storage

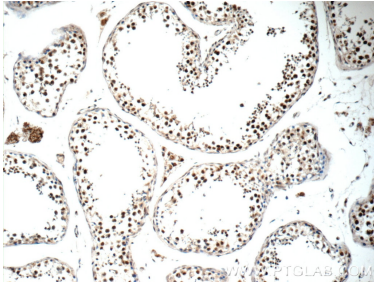
**Storage:**  
Store at -20°C. Stable for one year after shipment.  
**Storage Buffer:**  
PBS with 0.02% sodium azide and 50% glycerol pH 7.3.  
Aliquoting is unnecessary for -20°C storage

\*\*\* 20ul sizes contain 0.1% BSA

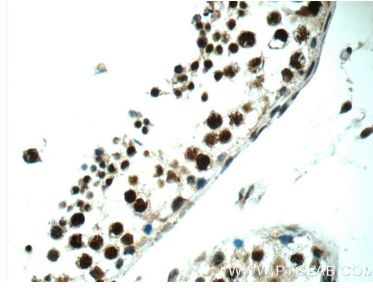
For technical support and original validation data for this product please contact:  
T: 1 (888) 4PTGLAB (1-888-478-4522) (toll free in USA), or 1(312) 455-8498 (outside USA)  
E: proteintech@ptglab.com  
W: ptglab.com

This product is exclusively available under Proteintech Group brand and is not available to purchase from any other manufacturer.

## Selected Validation Data



Immunohistochemical analysis of paraffin-embedded human testis tissue slide using 13434-1-AP (ALS2CR8 Antibody) at dilution of 1:50 (under 10x lens).



Immunohistochemical analysis of paraffin-embedded human testis tissue slide using 13434-1-AP (ALS2CR8 Antibody) at dilution of 1:50 (under 40x lens).