

For Research Use Only

CHD9 Polyclonal antibody

Catalog Number: 13402-1-AP

Featured Product

4 Publications



Basic Information

Catalog Number: 13402-1-AP	GenBank Accession Number: BC033770	Purification Method: Antigen affinity purification
Size: 150ul, Concentration: 700 µg/ml by Nanodrop and 500 µg/ml by Bradford method using BSA as the standard;	GeneID (NCBI): 80205	Recommended Dilutions: WB 1:1000-1:4000 IHC 1:20-1:200 IF 1:50-1:500
Source: Rabbit	Full Name: chromodomain helicase DNA binding protein 9	
Isotype: IgG	Calculated MW: 2897 aa, 326 kDa	
Immunogen Catalog Number: AG4245	Observed MW: 330 kDa	

Applications

Tested Applications: IF, IHC, WB, ELISA	Positive Controls: WB : SGC-7901 cells, K-562 cells
Cited Applications: ChIP, IHC, WB	IHC : human kidney tissue,
Species Specificity: human	IF : HeLa cells,
Cited Species: human	

Note-IHC: suggested antigen retrieval with TE buffer pH 9.0; (*) Alternatively, antigen retrieval may be performed with citrate buffer pH 6.0

Background Information

Notable Publications

Author	Pubmed ID	Journal	Application
Tomoyo Kawakubo-Yasukochi	28981169	Mol Carcinog	WB, IHC
Li Xu	30043858	Braz J Med Biol Res	IHC
Bo Guan	31949752	Int J Clin Exp Pathol	IHC

Storage

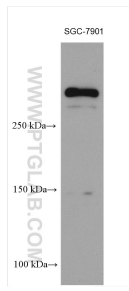
Storage:
Store at -20°C. Stable for one year after shipment.
Storage Buffer:
PBS with 0.02% sodium azide and 50% glycerol pH 7.3.
Aliquoting is unnecessary for -20°C storage

*** 20ul sizes contain 0.1% BSA

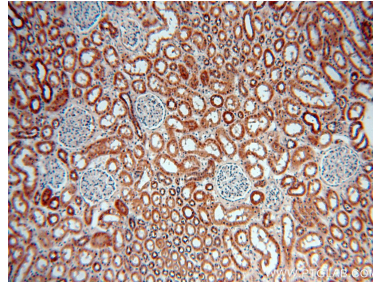
For technical support and original validation data for this product please contact:
T: 1 (888) 4PTGLAB (1-888-478-4522) (toll free in USA), or 1(312) 455-8498 (outside USA)
E: proteintech@ptglab.com
W: ptglab.com

This product is exclusively available under Proteintech Group brand and is not available to purchase from any other manufacturer.

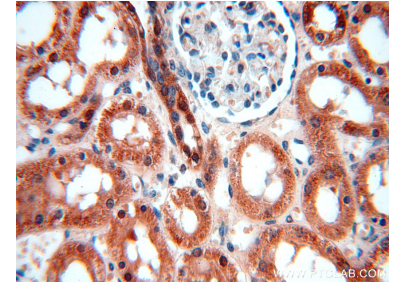
Selected Validation Data



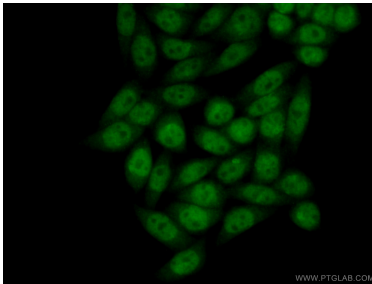
SGC-7901 cells were subjected to SDS PAGE followed by western blot with 13402-1-AP (CHD9 antibody) at dilution of 1:2000 incubated at room temperature for 1.5 hours.



Immunohistochemical analysis of paraffin-embedded human kidney using 13402-1-AP (CHD9 antibody) at dilution of 1:100 (under 10x lens).



Immunohistochemical analysis of paraffin-embedded human kidney using 13402-1-AP (CHD9 antibody) at dilution of 1:100 (under 40x lens).



Immunofluorescent analysis of (4% PFA) fixed HeLa cells using 13402-1-AP (CHD9 antibody) at dilution of 1:50 and Alexa Fluor 488-conjugated AffiniPure Goat Anti-Rabbit IgG(H+L).