

For Research Use Only

Galectin-4 Polyclonal antibody

Catalog Number: 13391-1-AP



Basic Information

Catalog Number: 13391-1-AP	GenBank Accession Number: BC034750	Purification Method: Antigen affinity purification
Size: 150ul , Concentration: 400 µg/ml by Nanodrop and 367 µg/ml by Bradford method using BSA as the standard;	GeneID (NCBI): 3960	Recommended Dilutions: WB 1:1000-1:5000 IHC 1:20-1:200 IF 1:50-1:500
Source: Rabbit	Full Name: lectin, galactoside-binding, soluble, 4	
Isotype: IgG	Calculated MW: 323 aa, 36 kDa	
Immunogen Catalog Number: AG4049	Observed MW: 36 kDa	

Applications

Tested Applications: FC, IF, IHC, WB, ELISA	Positive Controls: WB : HT-29 cells, COLO 320 cells IHC : human breast cancer tissue, IF : COLO 320 cells,
Species Specificity: human, mouse, rat	
Note-IHC: suggested antigen retrieval with TE buffer pH 9.0; (*) Alternatively, antigen retrieval may be performed with citrate buffer pH 6.0	

Background Information

Galectins are a family of animal lectins defined by shared characteristic amino-acid sequences and affinity for β-galactose-containing oligosaccharides (PMID: 8063692). Galectin-4 contains two arbohydate recognition domains (CRDs) and is expressed in the epithelium of oral mucosa, esophagus, and intestinal and colonic mucosa (PMID: 15546874; 15115909). Aberrant expression of galectin-4 has been reported in several cancers.

Storage

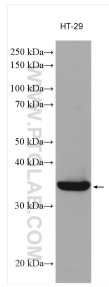
Storage:
Store at -20°C. Stable for one year after shipment.
Storage Buffer:
PBS with 0.02% sodium azide and 50% glycerol pH 7.3.
Aliquoting is unnecessary for -20°C storage

*** 20ul sizes contain 0.1% BSA

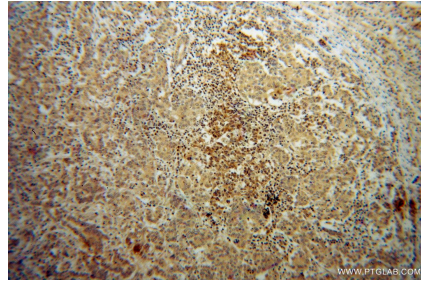
For technical support and original validation data for this product please contact:
T: 1 (888) 4PTGLAB (1-888-478-4522) (toll free in USA), or 1(312) 455-8498 (outside USA) E: proteintech@ptglab.com W: ptglab.com

This product is exclusively available under Proteintech Group brand and is not available to purchase from any other manufacturer.

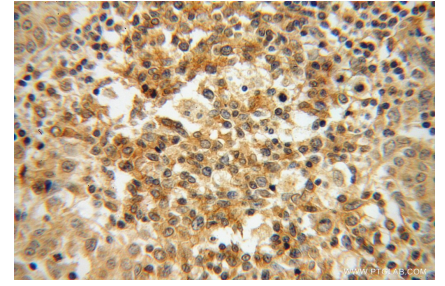
Selected Validation Data



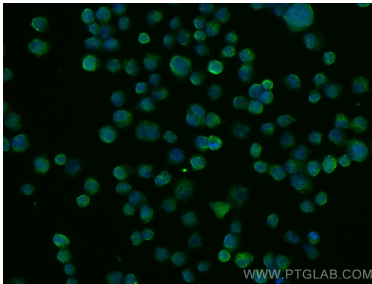
HT-29 cells were subjected to SDS PAGE followed by western blot with 13391-1-AP (Galectin-4 antibody) at dilution of 1:3000 incubated at room temperature for 1.5 hours.



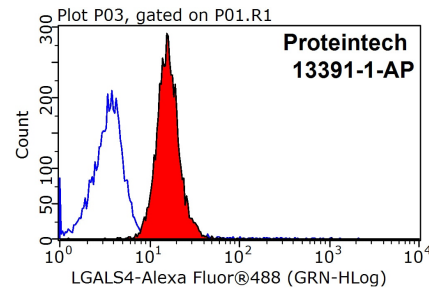
Immunohistochemical analysis of paraffin-embedded human breast cancer using 13391-1-AP (Galectin-4 antibody) at dilution of 1:50 (under 10x lens).



Immunohistochemical analysis of paraffin-embedded human breast cancer using 13391-1-AP (Galectin-4 antibody) at dilution of 1:50 (under 40x lens).



Immunofluorescent analysis of (4% PFA) fixed COLO 320 cells using Galectin-4 antibody (13391-1-AP) at dilution of 1:200 and CoraLite@488-Conjugated AffiniPure Goat Anti-Rabbit IgG(H+L).



1x10⁶ MCF-7 cells were stained with 0.2ug Galectin-4 antibody (13391-1-AP, red) and control antibody (blue). Fixed with 90% MeOH blocked with 3% BSA (30 min). Alexa Fluor 488-conjugated AffiniPure Goat Anti-Rabbit IgG(H+L) with dilution 1:1500.