

For Research Use Only

# CDC20B Polyclonal antibody

Catalog Number: 13376-1-AP **3 Publications**



## Basic Information

<b>Catalog Number:</b> 13376-1-AP	<b>GenBank Accession Number:</b> BC037547	<b>Purification Method:</b> Antigen affinity purification
<b>Size:</b> 150ul, Concentration: 550 µg/ml by Nanodrop and 267 µg/ml by Bradford method using BSA as the standard;	<b>GeneID (NCBI):</b> 166979	<b>Recommended Dilutions:</b> IHC 1:50-1:500 IF 1:50-1:500
<b>Source:</b> Rabbit	<b>Full Name:</b> cell division cycle 20 homolog B (S. cerevisiae)	
<b>Isotype:</b> IgG	<b>Calculated MW:</b> 192 aa, 22 kDa	
<b>Immunogen Catalog Number:</b> AG4198		

## Applications

<b>Tested Applications:</b> IF, IHC, ELISA	<b>Positive Controls:</b> IHC: human kidney tissue, IF: HeLa cells,
<b>Cited Applications:</b> CoIP, IF, IHC, WB	
<b>Species Specificity:</b> human	
<b>Cited Species:</b> human, mouse	

**Note-IHC: suggested antigen retrieval with TE buffer pH 9.0; (\*) Alternatively, antigen retrieval may be performed with citrate buffer pH 6.0**

## Background Information

### Notable Publications

Author	Pubmed ID	Journal	Application
Diego R Revinski	30405130	Nat Commun	WB, IF, CoIP
Xumin Hou	35212610	Bioengineered	WB
Jie Jiang	33912448	Front Oncol	IHC

## Storage

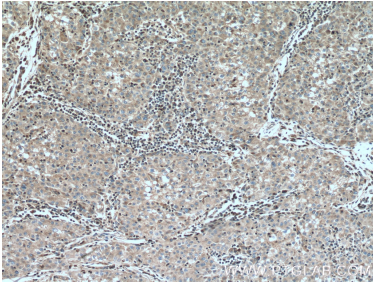
**Storage:**  
Store at -20°C. Stable for one year after shipment.  
**Storage Buffer:**  
PBS with 0.02% sodium azide and 50% glycerol pH 7.3.  
Aliquoting is unnecessary for -20°C storage

\*\*\* 20ul sizes contain 0.1% BSA

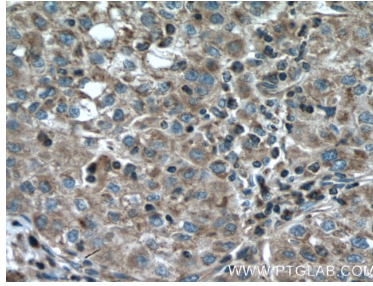
For technical support and original validation data for this product please contact:  
T: 1 (888) 4PTGLAB (1-888-478-4522) (toll free in USA), or 1(312) 455-8498 (outside USA)  
E: proteintech@ptglab.com  
W: ptglab.com

This product is exclusively available under Proteintech Group brand and is not available to purchase from any other manufacturer.

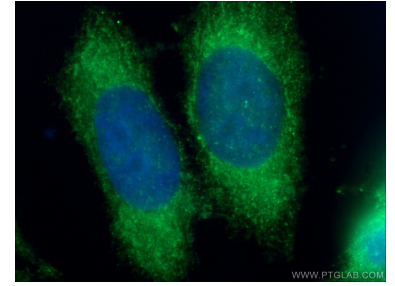
## Selected Validation Data



Immunohistochemical analysis of paraffin-embedded human kidney tissue slide using 13376-1-AP (CDC20B antibody) at dilution of 1:50 (under 10x lens).



Immunohistochemical analysis of paraffin-embedded human kidney tissue slide using 13376-1-AP (CDC20B antibody) at dilution of 1:50 (under 40x lens).



Immunofluorescent analysis of (-20°C Ethanol) fixed HeLa cells using 13376-1-AP (CDC20B antibody) at dilution of 1:50 and Alexa Fluor 488-Conjugated AffiniPure Goat Anti-Rabbit IgG(H+L).