

For Research Use Only

# RAD17 Polyclonal antibody

Catalog Number: 13358-1-AP

Featured Product

3 Publications



## Basic Information

|                                                                                                                         |                                               |                                                                                      |
|-------------------------------------------------------------------------------------------------------------------------|-----------------------------------------------|--------------------------------------------------------------------------------------|
| <b>Catalog Number:</b><br>13358-1-AP                                                                                    | <b>GenBank Accession Number:</b><br>BC032304  | <b>Purification Method:</b><br>Antigen affinity purification                         |
| <b>Size:</b><br>150ul, Concentration: 600 µg/ml by Nanodrop and 333 µg/ml by Bradford method using BSA as the standard; | <b>GeneID (NCBI):</b><br>5884                 | <b>Recommended Dilutions:</b><br>WB 1:1000-1:6000<br>IHC 1:20-1:200<br>IF 1:50-1:500 |
| <b>Source:</b><br>Rabbit                                                                                                | <b>Full Name:</b><br>RAD17 homolog (S. pombe) |                                                                                      |
| <b>Isotype:</b><br>IgG                                                                                                  | <b>Calculated MW:</b><br>681 aa, 71 kDa       |                                                                                      |
| <b>Immunogen Catalog Number:</b><br>AG4171                                                                              | <b>Observed MW:</b><br>71 kDa                 |                                                                                      |

## Applications

|                                                   |                                                          |
|---------------------------------------------------|----------------------------------------------------------|
| <b>Tested Applications:</b><br>IF, IHC, WB, ELISA | <b>Positive Controls:</b><br>WB: K-562 cells, Raji cells |
| <b>Cited Applications:</b><br>WB                  | <b>IHC:</b> human breast cancer tissue,                  |
| <b>Species Specificity:</b><br>human              | <b>IF:</b> HeLa cells,                                   |
| <b>Cited Species:</b><br>human, mouse             |                                                          |

**Note-IHC: suggested antigen retrieval with TE buffer pH 9.0; (\*) Alternatively, antigen retrieval may be performed with citrate buffer pH 6.0**

## Background Information

### Notable Publications

| Author             | Pubmed ID | Journal     | Application |
|--------------------|-----------|-------------|-------------|
| Jill E Hunter      | 36240066  | Biochem J   | WB          |
| Jill E Hunter      | 36240065  | Biochem J   | WB          |
| Emily M Schleicher | 35717336  | Oncogenesis | WB          |

## Storage

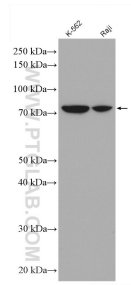
**Storage:**  
Store at -20°C. Stable for one year after shipment.  
**Storage Buffer:**  
PBS with 0.02% sodium azide and 50% glycerol pH 7.3.  
Aliquoting is unnecessary for -20°C storage

\*\*\* 20ul sizes contain 0.1% BSA

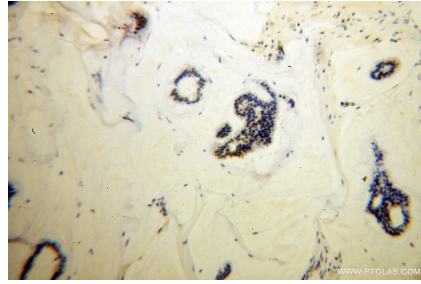
For technical support and original validation data for this product please contact:  
T: 1 (888) 4PTGLAB (1-888-478-4522) (toll free in USA), or 1(312) 455-8498 (outside USA)  
E: proteintech@ptglab.com  
W: ptglab.com

This product is exclusively available under Proteintech Group brand and is not available to purchase from any other manufacturer.

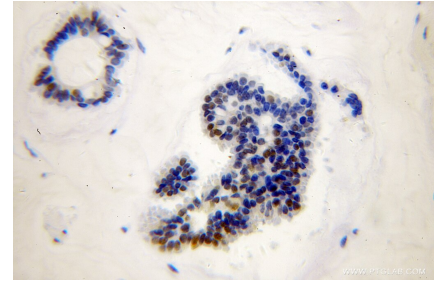
## Selected Validation Data



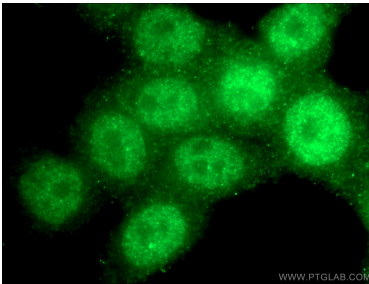
Various lysates were subjected to SDS PAGE followed by western blot with 13358-1-AP (RAD17 antibody) at dilution of 1:3000 incubated at room temperature for 1.5 hours.



Immunohistochemical analysis of paraffin-embedded human breast cancer using 13358-1-AP (RAD17 antibody) at dilution of 1:100 (under 10x lens).



Immunohistochemical analysis of paraffin-embedded human breast cancer using 13358-1-AP (RAD17 antibody) at dilution of 1:100 (under 40x lens).



Immunofluorescent analysis of (4% PFA) fixed HeLa cells using 13358-1-AP (RAD17 antibody) at dilution of 1:50 and Alexa Fluor 488-conjugated AffiniPure Goat Anti-Rabbit IgG(H+L).