

For Research Use Only

MLF1IP Polyclonal antibody

Catalog Number: 13186-1-AP

Featured Product

1 Publications



Basic Information

Catalog Number: 13186-1-AP	GenBank Accession Number: BC031520	Purification Method: Antigen affinity purification
Size: 150ul , Concentration: 133 µg/ml by Nanodrop and 133 µg/ml by Bradford method using BSA as the standard;	GeneID (NCBI): 79682	Recommended Dilutions: WB 1:1000-1:8000 IHC 1:20-1:200 IF 1:10-1:100
Source: Rabbit	Full Name: MLF1 interacting protein	
Isotype: IgG	Calculated MW: 418 aa, 48 kDa	
Immunogen Catalog Number: AG3858	Observed MW: 46-50 kDa, 60 kDa	

Applications

Tested Applications: IF, IHC, WB, ELISA	Positive Controls: WB : HepG2 cells, mouse liver tissue, mouse testis tissue, rat liver tissue
Cited Applications: IHC, WB	IHC : human testis tissue, human colon tissue, human gliomas tissue
Species Specificity: human, mouse, rat	IF : HepG2 cells,
Cited Species: human	

Note-IHC: suggested antigen retrieval with TE buffer pH 9.0; (*) Alternatively, antigen retrieval may be performed with citrate buffer pH 6.0

Background Information

MLF1IP, also named as CENPU, ICEN24, KLIP1 and PBIP1, belongs to the CENP-U/AME1 family. MLF1IP plays an important role in assembly of kinetochore proteins, mitotic progression and chromosome segregation. Moreover, MLF1IP has been shown to be involved in tumorigenesis in several types of cancer including glioblastoma, prostate cancer and luminal breast cancer (PMID: 27378428). MLF1IP has 3 isoforms with the molecular mass of 21, 38 and 47 kDa.

Notable Publications

Author	Pubmed ID	Journal	Application
Yuting Xu	35122991	Cell Signal	WB,IHC

Storage

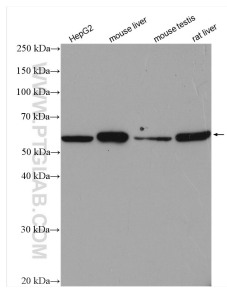
Storage:
Store at -20°C. Stable for one year after shipment.
Storage Buffer:
PBS with 0.02% sodium azide and 50% glycerol pH 7.3.
Aliquoting is unnecessary for -20°C storage

*** 20ul sizes contain 0.1% BSA

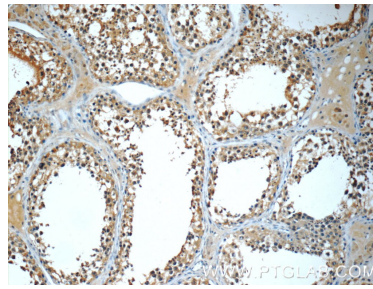
For technical support and original validation data for this product please contact:
T: 1 (888) 4PTGLAB (1-888-478-4522) (toll free in USA), or 1(312) 455-8498 (outside USA)
E: proteintech@ptglab.com
W: ptglab.com

This product is exclusively available under Proteintech Group brand and is not available to purchase from any other manufacturer.

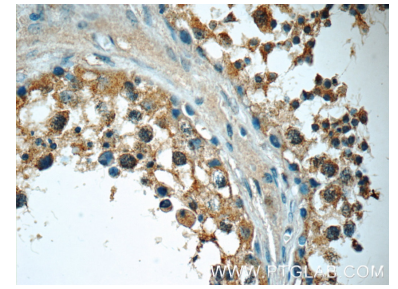
Selected Validation Data



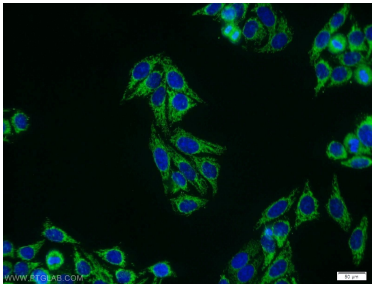
Various lysates were subjected to SDS PAGE followed by western blot with 13186-1-AP (MLF1P antibody) at dilution of 1:3000 incubated at room temperature for 1.5 hours.



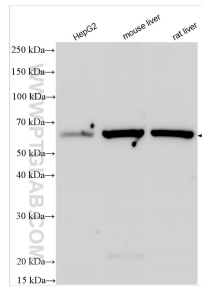
Immunohistochemical analysis of paraffin-embedded human testis tissue slide using 13186-1-AP (MLF1P Antibody) at dilution of 1:50 (under 10x lens).



Immunohistochemical analysis of paraffin-embedded human testis tissue slide using 13186-1-AP (MLF1P Antibody) at dilution of 1:50 (under 40x lens).



Immunofluorescent analysis of HepG2 cells using 13186-1-AP (MLF1P antibody) at dilution of 1:25 and Alexa Fluor 488-conjugated AffiniPure Goat Anti-Rabbit IgG(H+L).



Various lysates were subjected to SDS PAGE followed by western blot with 13186-1-AP (MLF1P antibody) at dilution of 1:4000 incubated at room temperature for 1.5 hours.