

For Research Use Only

KLF12 Polyclonal antibody

Catalog Number: **13156-1-AP**

Featured Product

8 Publications



Basic Information

Catalog Number:

13156-1-AP

Size:

150ul , Concentration: 450 µg/ml by Nanodrop;

Source:

Rabbit

Isotype:

IgG

Immunogen Catalog Number:

AG3788

GenBank Accession Number:

BC019680

GeneID (NCBI):

11278

UNIPROT ID:

Q9Y4X4

Full Name:

Kruppel-like factor 12

Calculated MW:

402 aa, 44 kDa

Observed MW:

65 kDa

Purification Method:

Antigen affinity purification

Recommended Dilutions:

WB 1:1000-1:4000

Applications

Tested Applications:

WB, ELISA

Cited Applications:

WB, IHC, CHIP

Species Specificity:

human

Cited Species:

human, mouse

Positive Controls:

WB : HepG2 cells, human kidney tissue, Raji cells

Background Information

KLF12, also named as AP2REP or HSPC122, is a 402 amino acid protein, which contains three C2H2-type zinc fingers and belongs to the Sp1 C2H2-type zinc-finger protein family. KLF12 localizes in the nucleus and confers strong transcriptional repression to the AP-2-alpha gene. KLF12 is a transcriptional silencer to the AP2-alpha gene, mediating positive and negative regulation of the AP2-A expression through a set of overlapping cis-regulatory promoters elements.

Notable Publications

Author	Pubmed ID	Journal	Application
N Godin-Heymann	26455320	Oncogene	WB
Jinjin Wang	31417288	Onco Targets Ther	WB
Jing Zhou	32738388	J Ethnopharmacol	WB

Storage

Storage:

Store at -20°C. Stable for one year after shipment.

Storage Buffer:

PBS with 0.02% sodium azide and 50% glycerol pH 7.3.

Aliquoting is unnecessary for -20°C storage

*** 20ul sizes contain 0.1% BSA

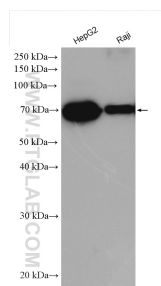
For technical support and original validation data for this product please contact:

T: 1 (888) 4PTGLAB (1-888-478-4522) (toll free in USA), or 1(312) 455-8498 (outside USA)

E: proteintech@ptglab.com
W: ptglab.com

This product is exclusively available under Proteintech Group brand and is not available to purchase from any other manufacturer.

Selected Validation Data



Various lysates were subjected to SDS PAGE followed by western blot with 13156-1-AP (KLF12 antibody) at dilution of 1:2000 incubated at room temperature for 1.5 hours.