

For Research Use Only

# GYG2 Polyclonal antibody

Catalog Number: 13150-1-AP



## Basic Information

<b>Catalog Number:</b> 13150-1-AP	<b>GenBank Accession Number:</b> BC023152	<b>Purification Method:</b> Antigen affinity purification
<b>Size:</b> 150ul , Concentration: 180 µg/ml by Nanodrop and 133 µg/ml by Bradford method using BSA as the standard;	<b>GeneID (NCBI):</b> 8908	<b>Recommended Dilutions:</b> WB 1:500-1:1000
<b>Source:</b> Rabbit	<b>Full Name:</b> glycogenin 2	
<b>Isotype:</b> IgG	<b>Calculated MW:</b> 501 aa, 55 kDa	
<b>Immunogen Catalog Number:</b> AG3765	<b>Observed MW:</b> 45 kDa, 66-70 kDa	

## Applications

<b>Tested Applications:</b> WB, ELISA	<b>Positive Controls:</b> WB : L02 cells, HEK-293 cells, human liver tissue
<b>Species Specificity:</b> human	

## Background Information

GYG2 belongs to the glycogenin family. Glycogenin is a self-glucosylating protein involved in the initiation phase of glycogen biosynthesis. Multiple alternatively spliced transcript variants encoding different isoforms have been identified, including the predominant band around 66 kDa and a light band around 45 kDa.

## Storage

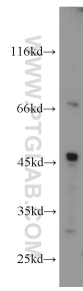
**Storage:**  
Store at -20°C. Stable for one year after shipment.  
**Storage Buffer:**  
PBS with 0.02% sodium azide and 50% glycerol pH 7.3.  
Aliquoting is unnecessary for -20°C storage

\*\*\* 20ul sizes contain 0.1% BSA

For technical support and original validation data for this product please contact:  
T: 1 (888) 4PTGLAB (1-888-478-4522) (toll free in USA), or 1(312) 455-8498 (outside USA) E: proteintech@ptglab.com W: ptglab.com

This product is exclusively available under Proteintech Group brand and is not available to purchase from any other manufacturer.

## Selected Validation Data



L02 cells were subjected to SDS PAGE followed by western blot with 13150-1-AP (GYG2 antibody) at dilution of 1:500 incubated at room temperature for 1.5 hours.