

For Research Use Only

# FGD1 Polyclonal antibody

Catalog Number: 13141-1-AP



## Basic Information

<b>Catalog Number:</b> 13141-1-AP	<b>GenBank Accession Number:</b> BC034530	<b>Purification Method:</b> Antigen affinity purification
<b>Size:</b> 150ul , Concentration: 260 µg/ml by Nanodrop and 133 µg/ml by Bradford method using BSA as the standard;	<b>GeneID (NCBI):</b> 2245	<b>Recommended Dilutions:</b> WB 1:500-1:1000 IHC 1:50-1:500
<b>Source:</b> Rabbit	<b>Full Name:</b> FYVE, RhoGEF and PH domain containing 1	
<b>Isotype:</b> IgG	<b>Calculated MW:</b> 901 aa, 91 kDa	
<b>Immunogen Catalog Number:</b> AG3861	<b>Observed MW:</b> 130 kDa	

## Applications

<b>Tested Applications:</b> IHC, WB, ELISA	<b>Positive Controls:</b> WB : BxPC-3 cells, SK-N-SH cells, U2OS cells IHC : mouse kidney tissue,
<b>Species Specificity:</b> human, mouse, rat	
<b>Note-IHC: suggested antigen retrieval with TE buffer pH 9.0; (*) Alternatively, antigen retrieval may be performed with citrate buffer pH 6.0</b>	

## Background Information

FGD1 is also named as FGDY (Faciogenital dysplasia 1 protein), ZFYVE3 (Zinc finger FYVE domain-containing protein 3), Rho/Rac guanine nucleotide exchange factor FGD1 (Rho/Rac GEF), FYVE, RhoGEF and PH domain-containing protein 1. FGD1 activates CDC42, a member of the Ras-like family of Rho- and Rac proteins, by exchanging bound GDP for free GTP. And FGD1 plays a role in regulating the actin cytoskeleton and cell shape. (PMID: 8969170). FGD1 was markedly overexpressed and might be a prognostic biomarker in osteosarcoma patient specimens (PMID: 32194840). FGD1 is specific for the Rho GTPase cell division cycle 42 (CDC42) (PMID: 22854039).

## Storage

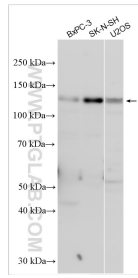
**Storage:**  
Store at -20°C. Stable for one year after shipment.  
**Storage Buffer:**  
PBS with 0.02% sodium azide and 50% glycerol pH 7.3.  
Aliquoting is unnecessary for -20°C storage

\*\*\* 20ul sizes contain 0.1% BSA

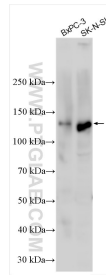
For technical support and original validation data for this product please contact:  
T: 1 (888) 4PTGLAB (1-888-478-4522) (toll free in USA), or 1(312) 455-8498 (outside USA)  
E: proteintech@ptglab.com  
W: ptglab.com

This product is exclusively available under Proteintech Group brand and is not available to purchase from any other manufacturer.

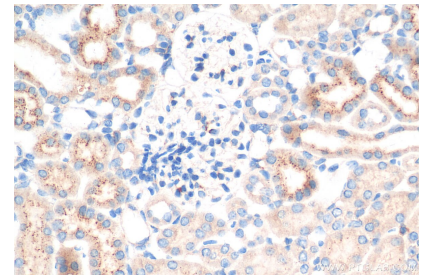
## Selected Validation Data



Various lysates were subjected to SDS PAGE followed by western blot with 13141-1-AP (FGD1 antibody) at dilution of 1:500 incubated at room temperature for 1.5 hours.



Various lysates were subjected to SDS PAGE followed by western blot with 13141-1-AP (FGD1 antibody) at dilution of 1:300 incubated at room temperature for 1.5 hours.



Immunohistochemical analysis of paraffin-embedded mouse kidney tissue slide using 13141-1-AP (FGD1 antibody) at dilution of 1:200 (under 40x lens). Heat mediated antigen retrieval with Tris-EDTA buffer (pH 9.0).