

For Research Use Only

PDE1B Polyclonal antibody

Catalog Number: 13121-1-AP



Basic Information

Catalog Number: 13121-1-AP	GenBank Accession Number: BC032226	Purification Method: Antigen affinity purification
Size: 150ul , Concentration: 500 µg/ml by Nanodrop;	GeneID (NCBI): 5153	Recommended Dilutions: WB 1:1000-1:8000
Source: Rabbit	Full Name: phosphodiesterase 1B, calmodulin-dependent	
Isotype: IgG	Calculated MW: 536 aa, 61 kDa	
Immunogen Catalog Number: AG3817	Observed MW: 61 kDa	

Applications

Tested Applications: WB, ELISA	Positive Controls: WB : mouse brain tissue, rat brain tissue, mouse cerebellum tissue
Species Specificity: mouse, rat	

Background Information

PDE1B, also known as PDE51B, belongs to the cyclic nucleotide phosphodiesterase family and PDE1 subfamily. PDE1B degrades cAMP and cGMP and regulates various important physiological processes such as proliferation and lipogenesis (PMID: 21960012). PDE1B is enriched in brain tissue. PDE1B gene consists of two isoforms, PDE1B1 (encoding 61 kDa protein with 536 amino acid residues) and PDE1B2 (encoding 59 kDa protein containing 516 amino acid residues).

Storage

Storage:
Store at -20°C. Stable for one year after shipment.
Storage Buffer:
PBS with 0.02% sodium azide and 50% glycerol pH 7.3.
Aliquoting is unnecessary for -20°C storage

*** 20ul sizes contain 0.1% BSA

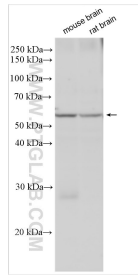
For technical support and original validation data for this product please contact:

T: 1 (888) 4PTGLAB (1-888-478-4522) (toll free in USA), or 1(312) 455-8498 (outside USA)

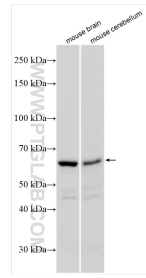
E: proteintech@ptglab.com
W: ptglab.com

This product is exclusively available under Proteintech Group brand and is not available to purchase from any other manufacturer.

Selected Validation Data



Various lysates were subjected to SDS PAGE followed by western blot with 13121-1-AP (PDE1B antibody) at dilution of 1:4000 incubated at room temperature for 1.5 hours.



Various lysates were subjected to SDS PAGE followed by western blot with 13121-1-AP (PDE1B antibody) at dilution of 1:2000 incubated at room temperature for 1.5 hours.