

For Research Use Only

PHPT1 Polyclonal antibody

Catalog Number: 13112-1-AP



Basic Information

Catalog Number: 13112-1-AP	GenBank Accession Number: BC024648	Purification Method: Antigen affinity purification
Size: 150ul , Concentration: 1000 µg/ml by Nanodrop and 520 µg/ml by Bradford method using BSA as the standard;	GeneID (NCBI): 29085	Recommended Dilutions: WB 1:500-1:2400 IF 1:20-1:200
Source: Rabbit	Full Name: phosphohistidine phosphatase 1	
Isotype: IgG	Calculated MW: 125 aa, 14 kDa	
Immunogen Catalog Number: AG3778	Observed MW: 14 kDa	

Applications

Tested Applications: IF, WB, ELISA	Positive Controls: WB : MCF7 cells, human kidney tissue
Species Specificity: human, mouse, rat	IF : HeLa cells,

Background Information

Storage

Storage:
Store at -20°C. Stable for one year after shipment.
Storage Buffer:
PBS with 0.02% sodium azide and 50% glycerol pH 7.3.
Aliquoting is unnecessary for -20°C storage

*** 20ul sizes contain 0.1% BSA

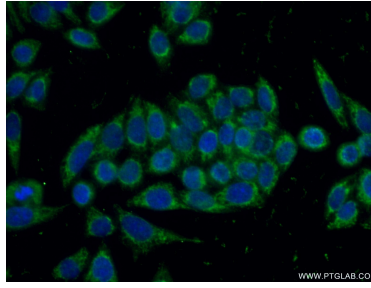
For technical support and original validation data for this product please contact:
T: 1 (888) 4PTGLAB (1-888-478-4522) (toll free in USA), or 1(312) 455-8498 (outside USA)
E: proteintech@ptglab.com
W: ptglab.com

This product is exclusively available under Proteintech Group brand and is not available to purchase from any other manufacturer.

Selected Validation Data



MCF7 cells were subjected to SDS PAGE followed by western blot with 13112-1-AP (PHPT1 antibody) at dilution of 1:500 incubated at room temperature for 1.5 hours.



Immunofluorescent analysis of (-20°C Ethanol) fixed HeLa cells using 13112-1-AP (PHPT1 antibody) at dilution of 1:50 and Alexa Fluor 488-conjugated AffiniPure Goat Anti-Rabbit IgG(H+L).