

For Research Use Only

CHTF18 Polyclonal antibody

Catalog Number: 13030-1-AP



Basic Information

Catalog Number: 13030-1-AP	GenBank Accession Number: BC018184	Purification Method: Antigen affinity purification
Size: 150ul , Concentration: 600 µg/ml by Nanodrop;	GeneID (NCBI): 63922	Recommended Dilutions: WB 1:500-1:1000 IHC 1:20-1:200
Source: Rabbit	Full Name: CTF18, chromosome transmission fidelity factor 18 homolog (S. cerevisiae)	
Isotype: IgG	Calculated MW: 1184 aa, 129 kDa	
Immunogen Catalog Number: AG3672	Observed MW: 110 kDa	

Applications

Tested Applications: IHC, WB, ELISA	Positive Controls: WB : HeLa cells, Y79 cells
Species Specificity: human, mouse, rat	IHC : human medulloblastoma tissue,
Note-IHC: suggested antigen retrieval with TE buffer pH 9.0; (*) Alternatively, antigen retrieval may be performed with citrate buffer pH 6.0	

Background Information

Storage

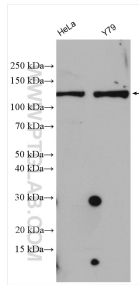
Storage:
Store at -20°C. Stable for one year after shipment.
Storage Buffer:
PBS with 0.02% sodium azide and 50% glycerol pH 7.3.
Aliquoting is unnecessary for -20°C storage

*** 20ul sizes contain 0.1% BSA

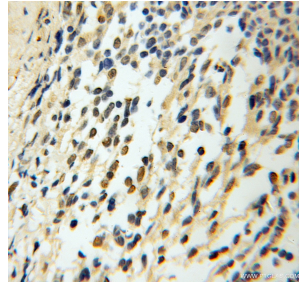
For technical support and original validation data for this product please contact:
T: 1 (888) 4PTGLAB (1-888-478-4522) (toll free in USA), or 1(312) 455-8498 (outside USA)
E: proteintech@ptglab.com
W: ptglab.com

This product is exclusively available under Proteintech Group brand and is not available to purchase from any other manufacturer.

Selected Validation Data



Various lysates were subjected to SDS PAGE followed by western blot with 13030-1-AP (CHTF18 antibody) at dilution of 1:800 incubated at room temperature for 1.5 hours.



Immunohistochemical analysis of paraffin-embedded human medulloblastoma using 13030-1-AP (CHTF18 antibody) at dilution of 1:100 (under 10x lens).