

For Research Use Only

SMARCD3 Polyclonal antibody

Catalog Number: 12838-1-AP

4 Publications



Basic Information

Catalog Number: 12838-1-AP	GenBank Accession Number: BC002628	Purification Method: Antigen affinity purification
Size: 150ul, Concentration: 650 µg/ml by Nanodrop and 367 µg/ml by Bradford method using BSA as the standard;	GeneID (NCBI): 6604	Recommended Dilutions: WB 1:500-1:3000 IHC 1:200-1:800 IF 1:50-1:500
Source: Rabbit	Full Name: SWI/SNF related, matrix associated, actin dependent regulator of chromatin, subfamily d, member 3	
Isotype: IgG	Calculated MW: 54 kDa	
Immunogen Catalog Number: AG3896	Observed MW: 54 kDa	

Applications

Tested Applications: IF, IHC, WB, ELISA	Positive Controls: WB : C6 cells, BxPC-3 cells, HeLa cells IHC : human pancreas cancer tissue, IF : human heart tissue, mouse pancreas tissue
Cited Applications: WB	
Species Specificity: human, mouse, rat	
Cited Species: human, mouse	

Note-IHC: suggested antigen retrieval with TE buffer pH 9.0; (*) Alternatively, antigen retrieval may be performed with citrate buffer pH 6.0

Background Information

SMARCD3 is a component of the SWI/SNF (mating type switching/sucrose non-fermenting) chromatin remodeling complex, which evolutionarily conserved from yeast to human, and all complexes contain a core set of conserved components, including BRG1/Brm-associated factors (BAFs) and a DNA-dependent SWI2/SNF2-like ATPase, which enables chromatin remodeling. SMARCD3 isoforms bind to several nuclear receptors and transcription factors of various families. SMARCD3 proteins interact in a ligand-independent manner with peroxisome proliferator-activated receptor gamma and enhance its transcriptional activity.

Notable Publications

Author	Pubmed ID	Journal	Application
Wei Zhuo	35597784	Cell Discov	WB
D'Aniello Cristina C	23787002	Cardiovasc Res	WB
Ying Chen	34999540	Transl Oncol	WB

Storage

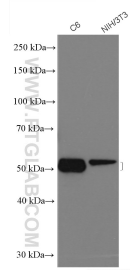
Storage:
Store at -20°C. Stable for one year after shipment.
Storage Buffer:
PBS with 0.02% sodium azide and 50% glycerol pH 7.3.
Aliquoting is unnecessary for -20°C storage

***** 20ul sizes contain 0.1%BSA**

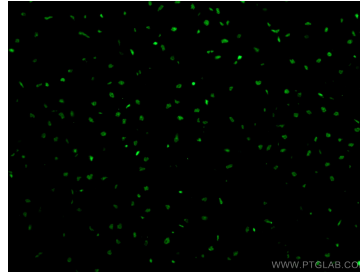
For technical support and original validation data for this product please contact:
T: 1 (888) 4PTGLAB (1-888-478-4522) (toll free in USA), or 1(312) 455-8498 (outside USA)
E: proteintech@ptglab.com
W: ptglab.com

This product is exclusively available under Proteintech Group brand and is not available to purchase from any other manufacturer.

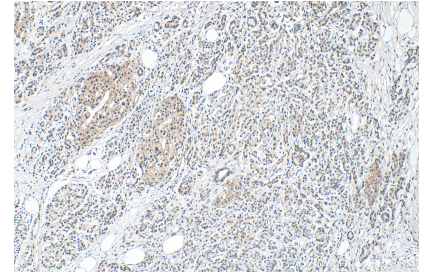
Selected Validation Data



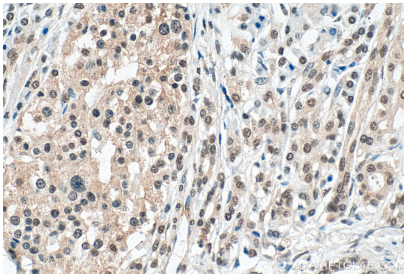
C6 and NIH3T3 cells were subjected to SDS PAGE followed by western blot with 12838-1-AP (SMARCD3 antibody) at dilution of 1:1500 incubated at room temperature for 1.5 hours.



Immunofluorescent analysis of (4% PFA) fixed human heart tissue using 12838-1-AP (SMARCD3 antibody) at dilution of 1:100 and CoraLite488-Conjugated AffiniPure Goat Anti-Rabbit IgG(H+L).



Immunohistochemical analysis of paraffin-embedded human pancreas cancer tissue slide using 12838-1-AP (SMARCD3 antibody) at dilution of 1:400 (under 10x lens). Heat mediated antigen retrieval with Tris-EDTA buffer (pH 9.0).



Immunohistochemical analysis of paraffin-embedded human pancreas cancer tissue slide using 12838-1-AP (SMARCD3 antibody) at dilution of 1:400 (under 40x lens). Heat mediated antigen retrieval with Tris-EDTA buffer (pH 9.0).