

For Research Use Only

EML1 Polyclonal antibody

Catalog Number: 12765-1-AP **1 Publications**



Basic Information

| | | |
|--|---|--|
| Catalog Number: 12765-1-AP | GenBank Accession Number: BC033043 | Purification Method: Antigen affinity purification |
| Size: 150ul , Concentration: 700 µg/ml by Nanodrop and 360 µg/ml by Bradford method using BSA as the standard; | GeneID (NCBI): 2009 | Recommended Dilutions: WB 1:1000-1:6000 |
| Source: Rabbit | Full Name: echinoderm microtubule associated protein like 1 | |
| Isotype: IgG | Calculated MW: 815 aa, 90 kDa | |
| Immunogen Catalog Number: AG3429 | Observed MW: 90-92 kDa | |

Applications

| | |
|--|--|
| Tested Applications: WB, ELISA | Positive Controls: WB : mouse brain tissue, rat brain tissue |
| Cited Applications: IF, WB | |
| Species Specificity: human, mouse, rat | |

Background Information

EML1 is a strong candidate for the Usher syndrome type 1A gene. Usher syndromes (USHs) are a group of genetic disorders consisting of congenital deafness, retinitis pigmentosa, and vestibular dysfunction of variable onset and severity depending on the genetic type. The disease process in USHs involves the entire brain and is not limited to the posterior fossa or auditory and visual systems. The USHs are categorized as type I (USH1A, USH1B, USH1C, USH1D, USH1E and USH1F), type II (USH2A and USH2B) and type III (USH3). The type I is the most severe form. Gene loci responsible for these three types are all mapped.

Notable Publications

| Author | Pubmed ID | Journal | Application |
|----------|-----------|---------------------|-------------|
| Hong Yin | 34124073 | Front Cell Dev Biol | IF, WB |

Storage

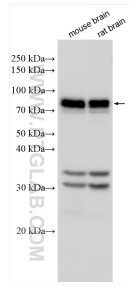
Storage:
Store at -20°C. Stable for one year after shipment.
Storage Buffer:
PBS with 0.02% sodium azide and 50% glycerol pH 7.3.
Aliquoting is unnecessary for -20°C storage

*** 20ul sizes contain 0.1% BSA

For technical support and original validation data for this product please contact:
T: 1 (888) 4PTGLAB (1-888-478-4522) (toll free in USA), or 1(312) 455-8498 (outside USA)
E: proteintech@ptglab.com
W: ptglab.com

This product is exclusively available under Proteintech Group brand and is not available to purchase from any other manufacturer.

Selected Validation Data



Various lysates were subjected to SDS PAGE followed by western blot with 12765-1-AP (EML1 antibody) at dilution of 1:3000 incubated at room temperature for 1.5 hours.