

For Research Use Only

# KIF1C Polyclonal antibody

Catalog Number: 12760-1-AP

Featured Product

2 Publications



## Basic Information

Catalog Number:  
12760-1-AP

Size:  
150ul, Concentration: 400 µg/ml by  
Nanodrop and 180 µg/ml by Bradford  
method using BSA as the standard;

Source:  
Rabbit

Isotype:  
IgG

Immunogen Catalog Number:  
AG3500

GenBank Accession Number:  
BC034993

GeneID (NCBI):  
10749

Full Name:  
kinesin family member 1C

Calculated MW:  
1103 aa, 123 kDa

Observed MW:  
135-140 kDa

Purification Method:  
Antigen affinity purification

Recommended Dilutions:  
WB 1:500-1:2000  
IP 0.5-4.0 µg for IP and 1:200-1:1000  
for WB  
IHC 1:50-1:500

## Applications

Tested Applications:  
IHC, IP, WB, ELISA

Cited Applications:  
IF, IP, WB

Species Specificity:  
human, mouse, rat

Cited Species:  
mouse

**Note-IHC: suggested antigen retrieval with  
TE buffer pH 9.0; (\*) Alternatively, antigen  
retrieval may be performed with citrate  
buffer pH 6.0**

Positive Controls:

WB: mouse heart tissue, A549 cells, HeLa cells

IP: mouse heart tissue,

IHC: human gliomas tissue,

## Background Information

### Notable Publications

Author	Pubmed ID	Journal	Application
Xavier Pichon	34493599	RNA	WB
Ryan P Hildebrandt	37296096	Nat Commun	WB,IF,IP

## Storage

Storage:

Store at -20°C. Stable for one year after shipment.

Storage Buffer:

PBS with 0.02% sodium azide and 50% glycerol pH 7.3.

Aliquoting is unnecessary for -20°C storage

\*\*\* 20ul sizes contain 0.1% BSA

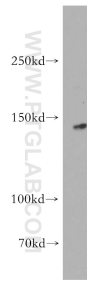
For technical support and original validation data for this product please contact:

T: 1 (888) 4PTGLAB (1-888-478-4522) (toll free  
in USA), or 1(312) 455-8498 (outside USA)

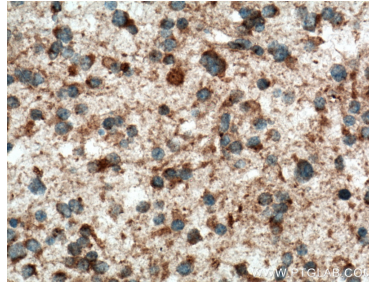
E: proteintech@ptglab.com  
W: ptglab.com

This product is exclusively available under Proteintech  
Group brand and is not available to purchase from any  
other manufacturer.

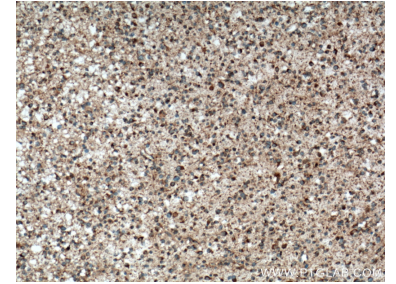
## Selected Validation Data



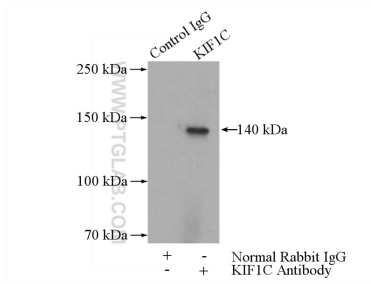
mouse heart tissue were subjected to SDS PAGE followed by western blot with 12760-1-AP (KIF1C antibody) at dilution of 1:500 incubated at room temperature for 1.5 hours.



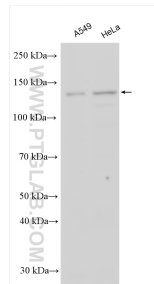
Immunohistochemical analysis of paraffin-embedded human gliomas tissue slide using 12760-1-AP (KIF1C antibody) at dilution of 1:200 (under 40x lens. Heat mediated antigen retrieval with Tris-EDTA buffer (pH 9.0).



Immunohistochemical analysis of paraffin-embedded human gliomas tissue slide using 12760-1-AP (KIF1C antibody) at dilution of 1:200 (under 10x lens. Heat mediated antigen retrieval with Tris-EDTA buffer (pH 9.0).



IP Result of anti-KIF1C (IP:12760-1-AP, 5ug; Detection:12760-1-AP 1:300) with mouse heart tissue lysate 4000ug.



Various lysates were subjected to SDS PAGE followed by western blot with 12760-1-AP (KIF1C antibody) at dilution of 1:1000 incubated at room temperature for 1.5 hours.