

For Research Use Only

STK38L Polyclonal antibody

Catalog Number: 12697-1-AP



Basic Information

Catalog Number: 12697-1-AP	GenBank Accession Number: BC028603	Purification Method: Antigen affinity purification
Size: 150ul , Concentration: 400 µg/ml by Nanodrop;	GeneID (NCBI): 23012	Recommended Dilutions: WB 1:500-1:2000 IHC 1:50-1:500
Source: Rabbit	Full Name: serine/threonine kinase 38 like	
Isotype: IgG	Calculated MW: 464 aa, 54 kDa	
Immunogen Catalog Number: AG3413	Observed MW: 54 kDa	

Applications

Tested Applications: IHC, WB, ELISA	Positive Controls: WB : HEK-293 cells, A375 cells
Species Specificity: human	IHC : human heart tissue,

Note-IHC: suggested antigen retrieval with TE buffer pH 9.0; (*) Alternatively, antigen retrieval may be performed with citrate buffer pH 6.0

Background Information

STK38L, also named as KIAA0965 and NDR2, belongs to the protein kinase superfamily and AGC Ser/Thr protein kinase family. It is involved in the regulation of structural processes in differentiating and mature neuronal cells. This antibody is specific to STK38L.

Storage

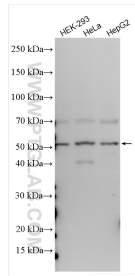
Storage:
Store at -20°C. Stable for one year after shipment.
Storage Buffer:
PBS with 0.02% sodium azide and 50% glycerol pH 7.3.
Aliquoting is unnecessary for -20°C storage

*** 20ul sizes contain 0.1% BSA

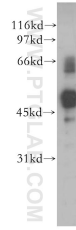
For technical support and original validation data for this product please contact:
T: 1 (888) 4PTGLAB (1-888-478-4522) (toll free in USA), or 1(312) 455-8498 (outside USA)
E: proteintech@ptglab.com
W: ptglab.com

This product is exclusively available under Proteintech Group brand and is not available to purchase from any other manufacturer.

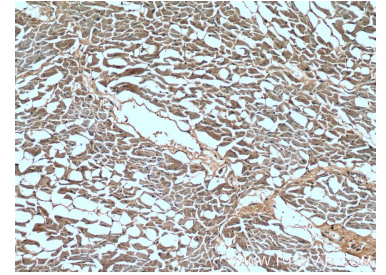
Selected Validation Data



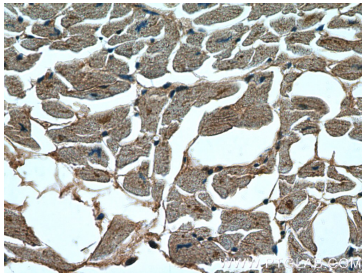
Various lysates were subjected to SDS PAGE followed by western blot with 12697-1-AP (STK38L antibody) at dilution of 1:1000 incubated at room temperature for 1.5 hours.



A375 cells were subjected to SDS PAGE followed by western blot with 12697-1-AP (STK38L antibody) at dilution of 1:400 incubated at room temperature for 1.5 hours.



Immunohistochemical analysis of paraffin-embedded human heart tissue slide using 12697-1-AP (STK38L Antibody) at dilution of 1:100 (under 10x lens).



Immunohistochemical analysis of paraffin-embedded human heart tissue slide using 12697-1-AP (STK38L Antibody) at dilution of 1:100 (under 40x lens).