

For Research Use Only

LANCL1 Polyclonal antibody

Catalog Number: 12647-1-AP

Featured Product

3 Publications



Basic Information

Catalog Number: 12647-1-AP	GenBank Accession Number: BC028685	Purification Method: Antigen affinity purification
Size: 150ul , Concentration: 260 µg/ml by Nanodrop and 240 µg/ml by Bradford method using BSA as the standard;	GeneID (NCBI): 10314	Recommended Dilutions: WB 1:500-1:1000 IHC 1:20-1:200
Source: Rabbit	Full Name: LanC lantibiotic synthetase component C-like 1 (bacterial)	
Isotype: IgG	Calculated MW: 399 aa, 45 kDa	
Immunogen Catalog Number: AG3361	Observed MW: 40 kDa	

Applications

Tested Applications: IHC, WB, ELISA	Positive Controls: WB : mouse testis tissue, IHC : human breast cancer tissue, mouse brain tissue
Cited Applications: IHC, WB	
Species Specificity: human, mouse	
Cited Species: human, mouse	

Note-IHC: suggested antigen retrieval with TE buffer pH 9.0; (*) Alternatively, antigen retrieval may be performed with citrate buffer pH 6.0

Background Information

LanCL1 (also known as P40 or GRP69A), is homologous to bacterial lanthionine synthetase C (LanC) family, which is involved in the biosynthesis of antimicrobial peptides (lantibiotics). LanCL1 was identified as a reduced glutathione (GSH)-binding protein and primarily expressed in neural tissues and testis.

Notable Publications

Author	Pubmed ID	Journal	Application
Fangxing Zhang	33117306	Front Microbiol	IHC
Debapriya Dutta	29880530	J Lipid Res	WB
Jianqing Wang	29416001	Cell Death Dis	WB

Storage

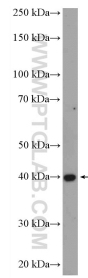
Storage:
Store at -20°C. Stable for one year after shipment.
Storage Buffer:
PBS with 0.02% sodium azide and 50% glycerol pH 7.3.
Aliquoting is unnecessary for -20°C storage

*** 20ul sizes contain 0.1% BSA

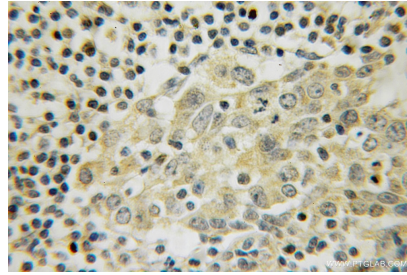
For technical support and original validation data for this product please contact:
T: 1 (888) 4PTGLAB (1-888-478-4522) (toll free in USA), or 1(312) 455-8498 (outside USA)
E: proteintech@ptglab.com
W: ptglab.com

This product is exclusively available under Proteintech Group brand and is not available to purchase from any other manufacturer.

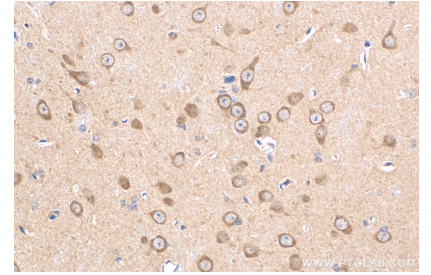
Selected Validation Data



mouse testis tissue were subjected to SDS PAGE followed by western blot with 12647-1-AP (LANCL1 antibody) at dilution of 1:600 incubated at room temperature for 1.5 hours.



Immunohistochemical analysis of paraffin-embedded human breast cancer using 12647-1-AP (LANCL1 antibody) at dilution of 1:50 (under 10x lens).



Immunohistochemical analysis of paraffin-embedded mouse brain tissue slide using 12647-1-AP (LANCL1 antibody) at dilution of 1:200 (under 40x lens). Heat mediated antigen retrieval with Tris-EDTA buffer (pH 9.0).