

For Research Use Only

# GAGE2D Polyclonal antibody

Catalog Number: 12532-1-AP



## Basic Information

<b>Catalog Number:</b> 12532-1-AP	<b>GenBank Accession Number:</b> BC018052	<b>Purification Method:</b> Antigen affinity purification
<b>Size:</b> 150ul , Concentration: 1000 µg/ml by Nanodrop and 567 µg/ml by Bradford method using BSA as the standard;	<b>GeneID (NCBI):</b> 729408	<b>Recommended Dilutions:</b> WB 1:500-1:2000 IHC 1:20-1:200 IF 1:10-1:100
<b>Source:</b> Rabbit	<b>Full Name:</b> G antigen 2D	
<b>Isotype:</b> IgG	<b>Calculated MW:</b> 116 aa, 13 kDa	
<b>Immunogen Catalog Number:</b> AG3230	<b>Observed MW:</b> 18-22 kDa	

## Applications

### Tested Applications:

IF, IHC, WB, ELISA

### Species Specificity:

human

**Note-IHC: suggested antigen retrieval with TE buffer pH 9.0; (\*) Alternatively, antigen retrieval may be performed with citrate buffer pH 6.0**

### Positive Controls:

WB : K-562 cells, HeLa cells, human testis tissue

IHC : human liver cancer tissue, human testis tissue

IF : HepG2 cells,

## Background Information

GAGE2D, also named as GAGE8 and CT4.8, is expressed in testis and tumor tissues.

## Storage

### Storage:

Store at -20°C. Stable for one year after shipment.

### Storage Buffer:

PBS with 0.02% sodium azide and 50% glycerol pH 7.3.

Aliquoting is unnecessary for -20°C storage

\*\*\* 20ul sizes contain 0.1% BSA

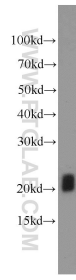
For technical support and original validation data for this product please contact:

T: 1 (888) 4PTGLAB (1-888-478-4522) (toll free in USA), or 1(312) 455-8498 (outside USA)

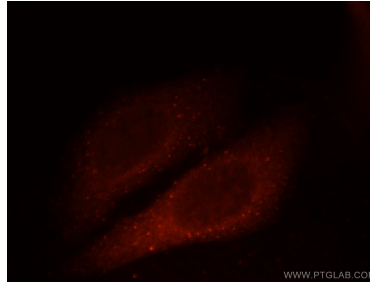
E: proteintech@ptglab.com  
W: ptglab.com

This product is exclusively available under Proteintech Group brand and is not available to purchase from any other manufacturer.

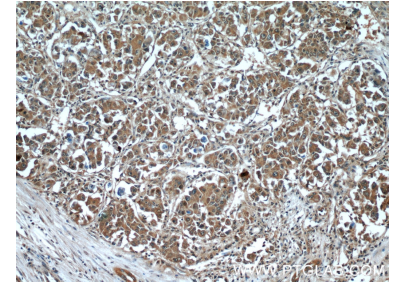
## Selected Validation Data



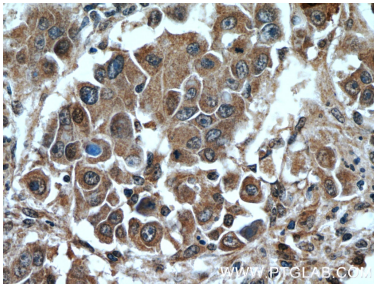
K-562 cells were subjected to SDS PAGE followed by western blot with 12532-1-AP (GAGE2D antibody) at dilution of 1:1000 incubated at room temperature for 1.5 hours.



Immunofluorescent analysis of HepG2 cells, using GAGE2D antibody 12532-1-AP at 1:25 dilution and Rhodamine-labeled goat anti-rabbit IgG (red).



Immunohistochemical analysis of paraffin-embedded human liver cancer tissue slide using 12532-1-AP (GAGE2D Antibody) at dilution of 1:50 (under 10x lens).



Immunohistochemical analysis of paraffin-embedded human liver cancer tissue slide using 12532-1-AP (GAGE2D Antibody) at dilution of 1:50 (under 40x lens).