

For Research Use Only

LGI1 Polyclonal antibody

Catalog Number: 12483-1-AP



Basic Information

| | | |
|--|---|--|
| Catalog Number: 12483-1-AP | GenBank Accession Number: BC022500 | Purification Method: Antigen affinity purification |
| Size: 150ul , Concentration: 300 µg/ml by Nanodrop and 220 µg/ml by Bradford method using BSA as the standard; | GeneID (NCBI): 9211 | Recommended Dilutions: WB 1:500-1:1000 |
| Source: Rabbit | Full Name: leucine-rich, glioma inactivated 1 | |
| Isotype: IgG | Calculated MW: 557 aa, 64 kDa | |
| Immunogen Catalog Number: AG3184 | Observed MW: 64 kDa, 58 kDa | |

Applications

| | |
|--|--|
| Tested Applications: WB,ELISA | Positive Controls: WB : human brain tissue, HeLa cells |
| Species Specificity: human, mouse, rat | |

Background Information

Storage

Storage:
Store at -20°C. Stable for one year after shipment.
Storage Buffer:
PBS with 0.02% sodium azide and 50% glycerol pH 7.3.
Aliquoting is unnecessary for -20°C storage

*** 20ul sizes contain 0.1% BSA

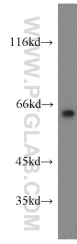
For technical support and original validation data for this product please contact:

T: 1 (888) 4PTGLAB (1-888-478-4522) (toll free in USA), or 1(312) 455-8498 (outside USA)

E: proteintech@ptglab.com
W: ptglab.com

This product is exclusively available under Proteintech Group brand and is not available to purchase from any other manufacturer.

Selected Validation Data



human brain tissue were subjected to SDS PAGE followed by western blot with 12483-1-AP (LGI 1 antibody) at dilution of 1:300 incubated at room temperature for 1.5 hours.