

For Research Use Only

RHBDL2 Polyclonal antibody

Catalog Number: 12467-1-AP

Featured Product

5 Publications



Basic Information

Catalog Number: 12467-1-AP	GenBank Accession Number: BC013103	Purification Method: Antigen affinity purification
Size: 150ul , Concentration: 450 µg/ml by Nanodrop and 233 µg/ml by Bradford method using BSA as the standard;	GeneID (NCBI): 54933	Recommended Dilutions: WB 1:500-1:1000
Source: Rabbit	Full Name: rhomboid, veinlet-like 2 (Drosophila)	
Isotype: IgG	Calculated MW: 303 aa, 34 kDa	
Immunogen Catalog Number: AG3142	Observed MW: 34-37 kDa	

Applications

Tested Applications: WB, ELISA	Positive Controls: WB : HeLa cells,
Cited Applications: IF, IHC, WB	
Species Specificity: human	
Cited Species: human, mouse	

Background Information

Notable Publications

Author	Pubmed ID	Journal	Application
Chiara Battistini	31783481	Int J Mol Sci	WB,IF
Adam G Grieve	34800360	Mol Cell	WB
Shiyu Chen	36351890	Cell Death Dis	WB,IHC,IF

Storage

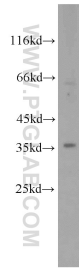
Storage:
Store at -20°C. Stable for one year after shipment.
Storage Buffer:
PBS with 0.02% sodium azide and 50% glycerol pH 7.3.
Aliquoting is unnecessary for -20°C storage

*** 20ul sizes contain 0.1% BSA

For technical support and original validation data for this product please contact:
T: 1 (888) 4PTGLAB (1-888-478-4522) (toll free in USA), or 1(312) 455-8498 (outside USA)
E: proteintech@ptglab.com
W: ptglab.com

This product is exclusively available under Proteintech Group brand and is not available to purchase from any other manufacturer.

Selected Validation Data



HeLa cells were subjected to SDS PAGE followed by western blot with 12467-1-AP (RHBDL2 antibody) at dilution of 1:500 incubated at room temperature for 1.5 hours.