

For Research Use Only

TBX6 Polyclonal antibody

Catalog Number: 12447-1-AP



Basic Information

Catalog Number:
12447-1-AP

Size:
150ul , Concentration: 650 µg/ml by Nanodrop and 367 µg/ml by Bradford method using BSA as the standard;

Source:
Rabbit

Isotype:
IgG

Immunogen Catalog Number:
AG3050

GenBank Accession Number:
BC026031

GeneID (NCBI):
6911

Full Name:
T-box 6

Calculated MW:
436 aa, 47 kDa

Observed MW:
58 kDa

Purification Method:
Antigen affinity purification

Recommended Dilutions:
WB 1:500-1:2000
IP 0.5-4.0 ug for IP and 1:500-1:1000 for WB

Applications

Tested Applications:
IP, WB, ELISA

Species Specificity:
human, mouse

Positive Controls:

WB : HeLa cells, A375 cells, A549 cells, human lung tissue, human placenta tissue, mouse lung tissue, Raji cells

IP : human placenta tissue,

Background Information

TBX6, also named as T-box transcription factor TBX6, is a 436 amino acid protein, which localizes in the nucleus and forms a dimeric complex with DNA. T-box transcription factor that plays an essential role in the determination of the fate of axial stem cells: neural vs mesodermal. The calculated molecular weight of TBX6 is 47 kDa, but the modified TBX6 is about 58 kDa.

Storage

Storage:

Store at -20°C. Stable for one year after shipment.

Storage Buffer:

PBS with 0.02% sodium azide and 50% glycerol pH 7.3.

Aliquoting is unnecessary for -20°C storage

*** 20ul sizes contain 0.1% BSA

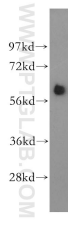
For technical support and original validation data for this product please contact:

T: 1 (888) 4PTGLAB (1-888-478-4522) (toll free in USA), or 1(312) 455-8498 (outside USA)

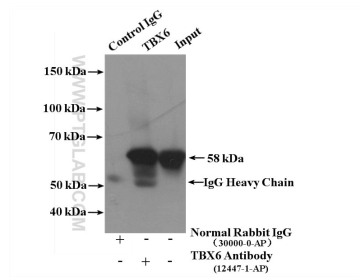
E: proteintech@ptglab.com
W: ptglab.com

This product is exclusively available under Proteintech Group brand and is not available to purchase from any other manufacturer.

Selected Validation Data



HeLa cells were subjected to SDS PAGE followed by western blot with 12447-1-AP (TBX6 antibody) at dilution of 1:800 incubated at room temperature for 1.5 hours.



IP Result of anti-TBX6 (IP:12447-1-AP, 4ug; Detection:12447-1-AP 1:500) with human placenta tissue lysate 2800ug.